

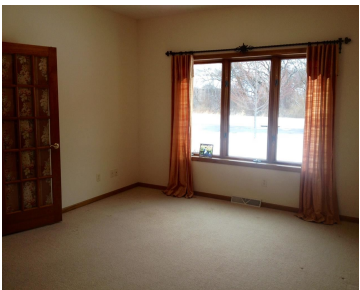
5611 LONGFORD TERRACE, FITCHBURG, WI, 53711

https://www.adashunjones.com

5611 Longford
Terrace, Fitchburg,
WI, 53711



\$379,500

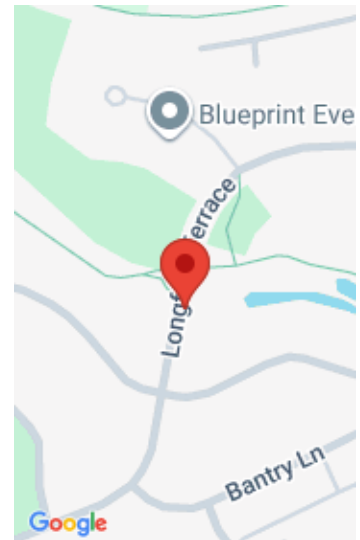


Highlands of Seminole: well kept contemporary ranch with fantastic views from every window. Delightful/bright kitchen, formal dining, 2/3 bdrms. Adjacent to Capital City Trail and stream. Screen porch, dinette, and living room overlook pond and nicely landscaped backyard. Brick patio with walkout from unfinished lower level with 9' ceilings. Handicap friendly with elevator & open...

- 2 beds
- 2 baths
- Res
- Sold
- 2399 sq ft



Kathy Bartels
Coldwell Banker Real Estate Group



Features

GarageYN: Yes

FireplaceYN: No

Features: Breakfast Bar,Dryer,Kitchen Island,Main Level,Pantry,Washer,Water softener inc,Wood Burning

Below Grade Finished Area, sq ft: 48

Tax Amount: 7489

AttachedGarageYN: Yes

PoolPrivateYN: No

Above Grade Finished Area, sq ft: 2351

Tax Year: 2013

Inclusions: All window coverings

Amenities

Waterfront available: No

Cooling: Central Air

Amenities: Dryer,Range,Refrigerator,Washer,Water Softener Owned **Water Source:** Public

Sewer: Public Sewer

Building Details

NewConstructionYN: No

Heating: Forced Air, Natural Gas

Basement: Full,Full Size Windows/Exposed,Walk-Out Access

Exterior material: Brick,Stone,Vinyl Siding

Parking: Attached,Garage Door Opener,Paved

Agent Details

Agent Full Name: Kathy Bartels

Agent Email: kbartels@starkhomes.com