

5610 STEEPLECHASE DRIVE, WI, 53597

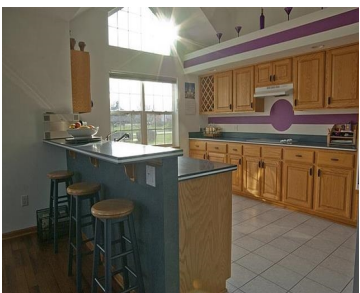
https://www.adashunjones.com

5610 Steeplechase Drive, WI, 53597



\$264,900

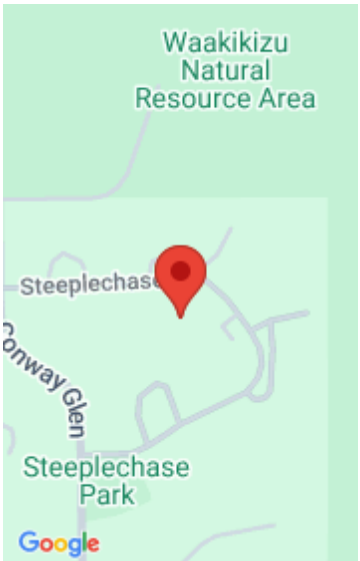
GORGEOUS RANCH UNIT W/3 BEDROOMS, 2.5 BATHS, 2 CAR GARAGE + PRIVATE LAUNDRY! LIVING ROOM W/CATHEDRAL CEILING, GAS FIREPLACE + BIG WINDOWS OPENS TO DINING AREA + AMAZING SUN ROOM W/FRENCH DOORS! BEAUTIFUL BRIGHT KITCHEN W/CORIAN COUNTERTOPS, BREAKFAST BAR, PANTRY + TILE FLOORS! HUMONGOUS FAMILY ROOM IN EXPOSED LOWER LEVEL! LARGE MASTER SUITE W/HUGE WALK-IN...



- 3 beds
- 2 baths
- Condominium,R-4
- Sold
- 2644 sq ft



Judy Acker Maly
RE/MAX Preferred



Features

GarageYN: Yes

FireplaceYN: No

Utilities: Cable Available

AttachedGarageYN: Yes

PoolPrivateYN: No

Features: Accessible Bedroom, Accessible Full Bath, Breakfast Bar, Gas, Lower Level, Pantry, Vaulted Ceiling(s), Walk-in Closet(s)

Above Grade Finished Area, sq ft: 1659

Below Grade Finished Area, sq ft: 985

Tax Year: 2012

Tax Amount: 5122

Inclusions: All window coverings

Amenities

Waterfront available: No

Cooling:
Central Air

Amenities:

Dishwasher, Disposal, Dryer, Microwave, Range, Refrigerator, Washer, Water Softener Owned

Water Source:
Public

Sewer: Public Sewer

Building Details

NewConstructionYN: No

Heating: Forced Air, Natural Gas

Basement: Daylight, Full, Partially Finished

Exterior material: Brick, Stone, Vinyl Siding

Parking: Attached, Garage, Garage Door Opener

Agent Details

Agent Full Name: Judy Acker Maly

Agent Email: judy@ackermaly.com