

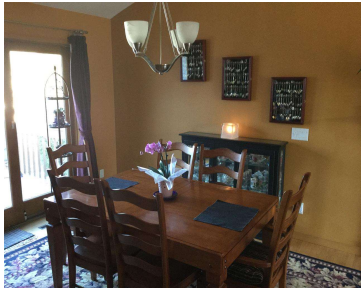
5558 LONGFORD TERRACE, FITCHBURG, WI, 53711

https://www.adashunjones.com

5558 Longford Terrace, Fitchburg, WI, 53711



\$329,900



4 bed/3 bath Highlands of Seminole ranch. Features inc. open fl plan, hardwood floors, main fl laund, cath ceilings, gas firepl, cent vac, 4 sola tubes, kitchen island & Corian countertops. All 36" oak 6 panel doors & is "disabled" friendly, mstr bath w/walk-in shower w/grab bars. Exp LL w/8.5' ceilings, storage & wet bar....

- 4 beds
- 3 baths
- Res
- Sold
- 2766 sq ft



Seth Pfaehler  
The McGrady Group, LLC



---

## Features

**GarageYN:** Yes

**FireplaceYN:** Yes

**Security Features:** Security System

**Features:** Accessible Bedroom, Accessible Doors, Accessible Full Bath, Accessible Hallway(s), Cable Available, Central Vacuum, Dryer, Gas, Jetted bathtub, Kitchen Island, Main Level, Pantry, Security System, Vaulted Ceiling(s), Washer, Water softener inc, Wet Bar

**Below Grade Finished Area, sq ft:** 1140

**Tax Amount:** 6965

**AttachedGarageYN:** Yes

**PoolPrivateYN:** No

**Utilities:** Cable Available

**Above Grade Finished Area, sq ft:** 1626

**Tax Year:** 2014

**Inclusions:** Humidifier, All window coverings

---

## Amenities

**Waterfront available:** No

**Amenities:**

Dishwasher, Disposal, Dryer, Freezer, Microwave, Range, Refrigerator, Washer, Water Softener Owned

**Sewer:** Public Sewer

**Cooling:**  
Central Air

**Water Source:**  
Public

---

## Building Details

**NewConstructionYN:** No

**Basement:** Finished, Full, Full Size Windows/Exposed, Sump Pump

**Parking:** Attached, Garage Door Opener, Heated Garage, Paved

**Heating:** Forced Air, Natural Gas

**Exterior material:**  
Brick, Stone, Vinyl Siding, Wood Siding

---

## Agent Details

**Agent Full Name:** Seth Pfaehler

**Agent Email:** seth@themcgradygroup.com