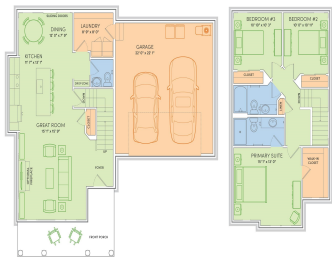


5299 ATHLONE ROAD, FITCHBURG, WI, 53711

<https://www.adashunjones.com>

5299 Athlone Road,
Fitchburg, WI,
53711



\$534,900

NTATIVE MODEL FOR COMPARISON

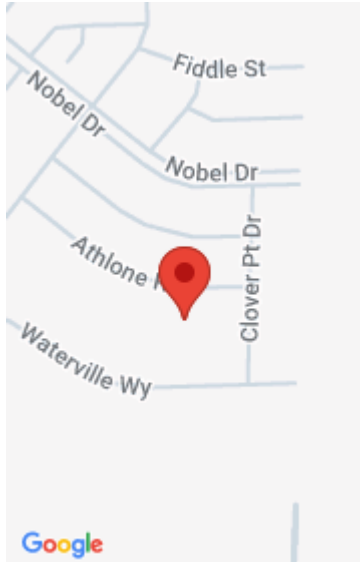
Move-in ready 6/24/26. This Emerald home features a thoughtfully designed, open-concept layout ideal for modern living. Offering 3 bedrooms, 2.5 baths, and a 2-car garage, this home showcases locally made, custom Auburn Ridge® cabinetry, doors, and trim crafted to last. The stylish kitchen includes a center island, quartz countertops, and quality finishes from trusted brands...

• 1647 sq ft



Natalie Mecum

Stark Company, REALTORS



Features

Days on Market: 28

Lot Size, acres: 0.18

Subdivision Name: HIGHFIELD RESERVE

Association Fee: 370

GarageYN: Yes

Heating: Forced Air, Natural Gas

FireplaceYN: No

Community Features: Sidewalks

Features: Accessible Doors, Accessible Hallway(s), Breakfast Bar, Cable Available, Dryer, Kitchen Island, Main Level, Walk-in Closet(s), Washer, Water softener inc

Above Grade Finished Area, sq ft: 1647

Tax Year: 2025

Tax Amount: \$1,011

Area, sq ft: 1,647 sq ft

Year built: 2026

Garage Spaces: 2

Parcel Number: 0609-154-0800-2

AttachedGarageYN: Yes

Cooling: Central Air

PoolPrivateYN: No

Utilities: Cable Available

Amenities: Dishwasher, Disposal, Dryer, Microwave, Range, Refrigerator, Washer, Water Softener Owned

Water Source: Public

Sewer: Public Sewer

Building Details

NewConstructionYN: No

Exterior Material: Stone, Vinyl Siding

Basement: Bath/Stubbed,Concrete,Full,Sump Pump

Parking: Attached, Garage Door Opener, Paved

Agent Details

Agent Full Name: Natalie Mecum

Agent Email: NMecum@veridianhomes.com