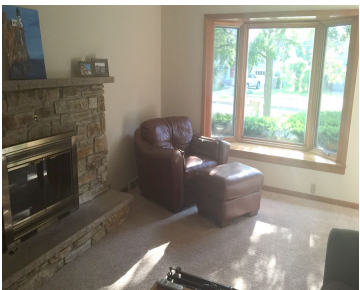


513 CLIFDEN DRIVE, MADISON, WI, 53711

https://www.adashunjones.com

513 CLIFDEN Drive,
Madison, WI, 53711

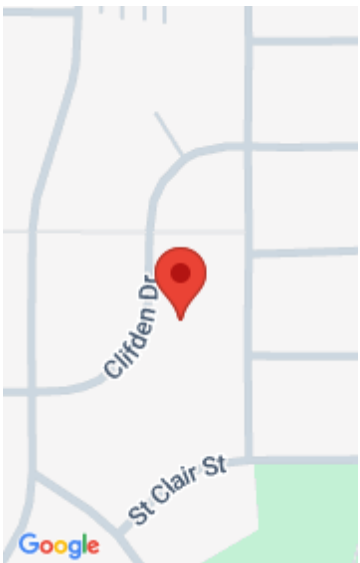


Tenant occupied. Lease signed through 4/2016. Purchase now to prepare for future move. Westmorland ranch home with two car garage, truly a unique find. Three bedrooms and two bathrooms, all on the main level. Not only is the home spacious, but the large yard offers great space and landscaping. Walk to Sequoia Library, Westmorland Park,...

- 3 beds
- 2 baths
- TR-C1
- Sold
- 1924 sq ft



Eric Breidel
Investment Realty Services LLC



Features

GarageYN: Yes

FireplaceYN: Yes

Utilities: Cable Available

AttachedGarageYN: No

PoolPrivateYN: No

Features: Accessible Bedroom, Accessible Full Bath, Cable Available, Dryer, Lower Level, Washer, Water softener inc

Above Grade Finished Area, sq ft: 1536

Below Grade Finished Area, sq ft: 388

Tax Year: 2013

Tax Amount: 5897

Inclusions: Play Structure

Amenities

Waterfront available: No

Cooling:
Central Air

Amenities: Dishwasher, Disposal, Dryer, Range, Refrigerator, Washer, Water Softener Owned

Water Source: Public

Sewer: Public Sewer

Building Details

NewConstructionYN: No

Heating: Forced Air, Natural Gas

Basement: Full, Partial

Exterior material: Vinyl Siding

Parking: Detached, Garage Door Opener, Paved

Agent Details

Agent Full Name: Eric Breidel

Agent Email: ebreidel@gmail.com