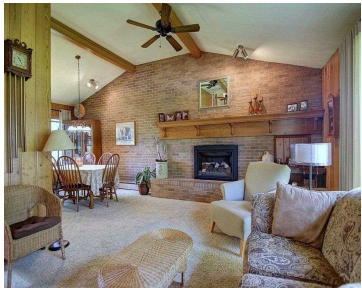


5113 MELINDA DRIVE, MADISON, WI, 53716

https://www.adashunjones.com

5113 MELINDA  
Drive, Madison, WI,  
53716



NEW AMAZING PRICE! Superb quality and the BEST kind of mid-century modern character! Built by the pres of WI Brick & Block for his own family, so you know it's a good one! Plenty of exposed brick, warm (real) tongue-and-groove cedar paneling, built-ins, beams, vaulted ceiling, 6 panel doors, fireplace (gas). 3 zones of radiant...

- 3 beds
- 2 baths
- SR-C1
- Sold
- 2372 sq ft



Jenny Swain  
Keller Williams Realty



---

## Features

**GarageYN:** Yes

**AttachedGarageYN:** Yes

**FireplaceYN:** No

**PoolPrivateYN:** No

**Utilities:** Cable Available

**Features:** Cable Available,Dryer,Lower Level,Vaulted Ceiling(s),Washer,Water softener inc,Wood Burning

**Above Grade Finished Area, sq ft:** 2125

**Below Grade Finished Area, sq ft:** 247

**Tax Year:** 2013

**Tax Amount:** 4775

**Inclusions:** All window coverings

---

## Amenities

**Waterfront available:** No

**Amenities:**

Dishwasher,Disposal,Dryer,Microwave,Range,Refrigerator,Washer,Water Softener Owned

**Water Source:** Public

**Sewer:** Public Sewer

---

## Building Details

**NewConstructionYN:** No

**Heating:** Radiant, Natural Gas

**Basement:** Partial,Partially Finished **Exterior material:** Brick,Stone,Wood Siding

**Parking:** Attached,Paved

---

## Agent Details

**Agent Full Name:** Jenny Swain

**Agent Email:** jenny@jennyswain.com