

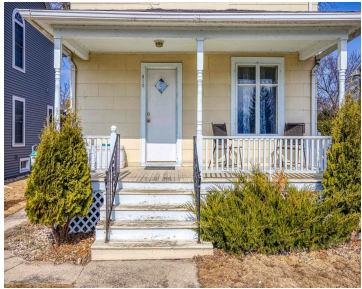
510 LINCOLN STREET, NEENAH, WI, 54956

https://www.adashunjones.com

510 LINCOLN  
Street, NEENAH, WI,  
54956



\$145,000



Take the leap into homeownership with this affordable 2-bedroom home on Historic Doty Island! Conveniently located just steps away from Lake Winnebago, Doty Park, and ThedaCare Medical Center. Featuring a spacious kitchen and dining area on the main floor as well as 2 bedrooms and a full bath upstairs, this home's efficient layout is just...



**Kelly**  
LPT Realty

- 2 beds
- 1 bath
- Residential
- Residential
- Active
- 875 sq ft



---

## Features

<b>GarageYN:</b> No	<b>AttachedGarageYN:</b> No
<b>FireplaceYN:</b> No	<b>PoolPrivateYN:</b> No
<b>Lot Features:</b> Sidewalk	<b>Features:</b> At Least 1 Bathtub,Cable Available,Hi-Speed Internet Availbl,None,Wood/Simulated Wood Fl
<b>Above Grade Finished Area, sq ft:</b> 875	<b>Tax Amount:</b> 1863.74
<b>Inclusions:</b> Refrigerator, Oven, Dishwasher, Microwave, Washer, Dryer, Window Treatments, Garage Cabinets	<b>Exclusions:</b> Chest Freezer

---

## Amenities

<b>Waterfront available:</b> No	<b>Amenities:</b> Dishwasher,Dryer,Microwave,Range/Oven,Refrigerator,Washer
<b>Water Source:</b> Municipal/City	<b>Sewer:</b> Municipal Sewer

---

## Room Sizes

Room type	Dimensions	Level
Bedroom 1	15x11	Upper
Bedroom 2	15x08	Upper
Kitchen	11x10	Main
Living Or Great Room	15x12	Main
Dining Room	11x09	Main

## Building Details

**NewConstructionYN:** No  
**Heating:** Central A/C, Forced Air  
**Exterior material:** Other

**ArchitecturalStyle:** Farmhouse/National Folk  
**Basement:** Full  
**Parking:** Detached,Opener Included

## Agent Details

**Agent Full Name:** Kelly L Davies  
**Agent Email:** kelly@kellydavieshomes.com