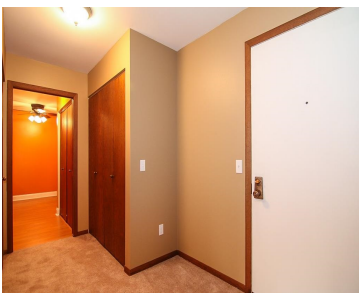


4924 WHITCOMB DRIVE, WI, 53711

https://www.adashunjones.com

4924 WHITCOMB
Drive, WI, 53711



Large (1725 sq.ft.) 2 Bedroom, 2 bath in a terrific location. New carpet & paint throughout.Laundry hookups, wet bar, spacious rooms, large porch,2 underground parking spaces, large storage area.Condo fee includes everything but electricity. An excellent value!

- 2 beds
- 2 baths
- Condominium,SR-V2
- Sold
- 1725 sq ft



Leonard Piontek
Realty Executives Cooper Spransy



Features

GarageYN: No

AttachedGarageYN: No

FireplaceYN: No

PoolPrivateYN: No

Security Features: Security System, Building Security

Features: Accessible Bedroom, Accessible Entrance, Accessible Full Bath, Main Level, Pantry, Storage, Walk-in Closet(s)

Above Grade Finished Area, sq ft: 1725

Tax Year: 2013

Tax Amount: 2352

Inclusions: Window/Wall AC, All window coverings

Amenities

Waterfront available: No

Amenities: Dishwasher, Range, Refrigerator

Water Source: Public

Sewer: Public Sewer

Building Details

NewConstructionYN: No

Heating: Radiant, Natural Gas

Exterior material: Brick, Stone

Parking: Assigned, Garage Door Opener, Underground

Agent Details

Agent Full Name: Leonard Piontek

Agent Email: leonardpiontek@realtyexecutives.com