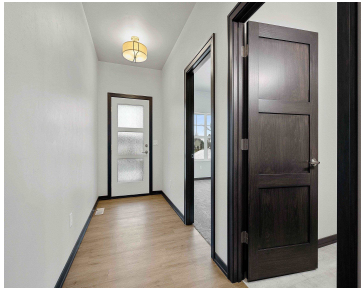


491 PAPERMILL CIRCLE, KIMBERLY, WI, 54136-0000

https://www.adashunjones.com

491 PAPERMILL  
Circle, Kimberly,  
WI, 54136-0000



\$379,900

Enjoy carefree living in this beautiful no step entry, side by side condo. Open concept 1-story with spacious great room featuring tray ceiling, large daylight windows, gas FP & door to maintenance free deck. Kitchen offers abundant custom cabinets, quartz countertops, tile backsplash & center island. Enjoy the large master suite with tray ceiling, walk-in...

- 2 beds
- 2 baths
- Residential
- Condo,Condominium
- Active
- 1561 sq ft



**Lisa**  
Resource One Realty, LLC



---

## Features

<b>GarageYN:</b> No	<b>AttachedGarageYN:</b> No
<b>FireplaceYN:</b> No	<b>PoolPrivateYN:</b> No
<b>Features:</b> Gas,Kitchen Island,One,Pantry	<b>Above Grade Finished Area, sq ft:</b> 1561
<b>Tax Amount:</b> 2186.49	<b>Inclusions:</b> Dishwasher, Microwave, 1 Year Builder Warranty from Date of Closing

---

## Amenities

<b>Waterfront available:</b> No	<b>Cooling:</b> Central Air
<b>Amenities:</b> Dishwasher,Microwave	<b>Water Source:</b> Public
<b>Sewer:</b> Public Sewer	

---

## Room Sizes

Room type	Dimensions	Level
Bedroom 1	17x15	Main
Bedroom 2	14x11	Main
Kitchen	16x13	Main
Living Or Great Room	20x16	Main
Dining Room	16x10	Main
Other Room	7x6	Main

## Building Details

**NewConstructionYN:** Yes

**Exterior material:** Stone,Vinyl,Vinyl Siding

**Heating:** Forced Air

**Parking:** Attached,Garage,Garage - 2 Car

## Agent Details

**Agent Full Name:** Lisa R Parkos-Verhagen

**Agent Email:** lparkos@resource1gb.com