

4736 ROMAINE ROAD, FITCHBURG, WI, 53711

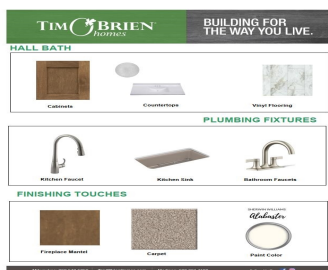
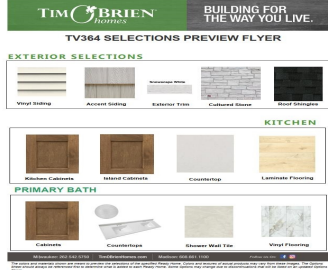
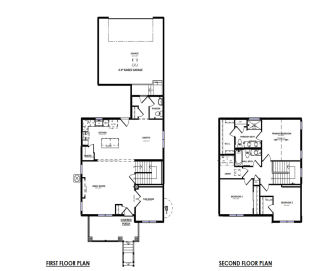
https://www.adashunjones.com

4736 Romaine Road, Fitchburg, WI, 53711



SIMILAR MODEL

\$574,900

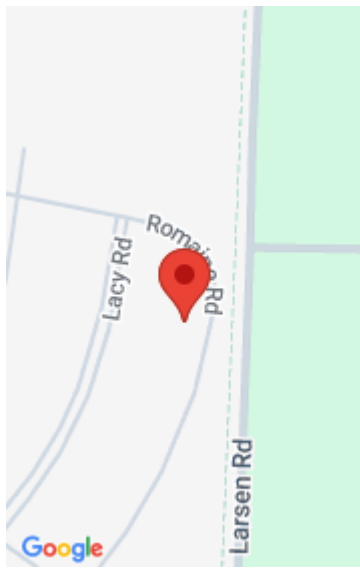


Healthy, Energy-Efficient, NEW Construction, Built for the way you live!
 Discover easy living in Terravessa, a vibrant community just 12 minutes from the heart of downtown w/ convenient access to local shops and amenities. Nestled beside a stunning 170-acre nature preserve with scenic walking trails, this home offers the perfect blend of comfort and nature....

• 1927 sq ft



Aeryn Barry
 Tim O'Brien Homes LLC



Features

Days on Market: 17

Lot Size, acres: 0.11

Subdivision Name: Terravessa

Association Fee: 200

GarageYN: Yes

Heating: Forced Air, Natural Gas

FireplaceYN: Yes

Community Features: Sidewalks

Utilities: Cable Available

Amenities: Dishwasher, Disposal, ENERGY STAR Qualified Appliances, Microwave, Range, Refrigerator, Water Softener Owned

Water Source: Public

Sewer: Public Sewer

Area, sq ft: 1,927 sq ft

Year built: 2026

Garage Spaces: 2

Parcel Number: 0609-014-6304-2

AttachedGarageYN: Yes

Cooling: Central Air

PoolPrivateYN: No

Lot Features: Near Public Transit

Features: Accessible Doors, Accessible Hallway(s), Breakfast Bar, Cable Available, Electric, High Speed Internet, Kitchen Island, Pantry, Upper Level, Vaulted Ceiling(s), Walk-in Closet(s), Water softener inc

Above Grade Finished Area, sq ft: 1927

Tax Year: 2025

Tax Amount: \$1,331

Building Details

NewConstructionYN: Yes

Exterior Material: Stone, Vinyl Siding

Basement: Bath/Stubbed,Concrete,Full,Sump Pump

Parking: Attached, Garage Door Opener, Paved

Agent Details

Agent Full Name: Aeryn Barry

Agent Email: abarry@tobhomes.com