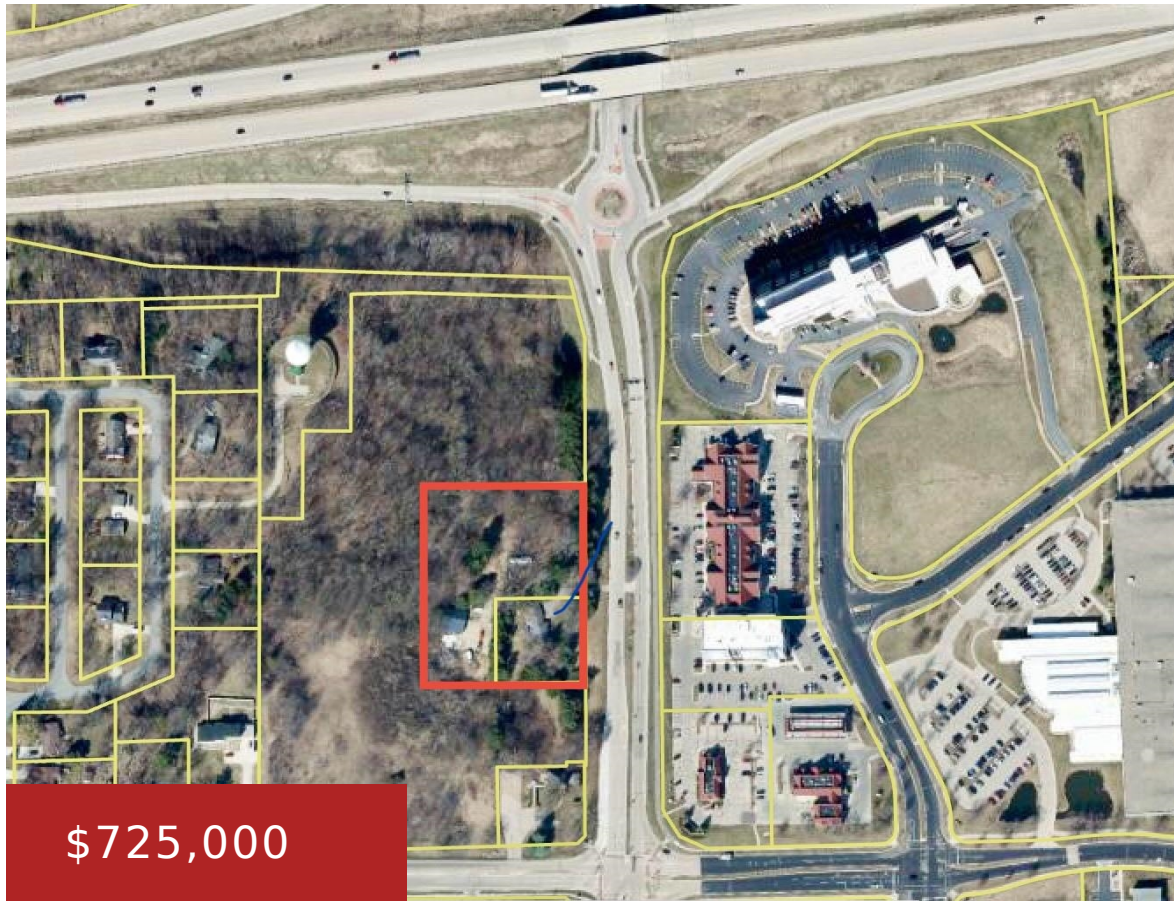


**4707 & 4711 COUNTY HWY N, COTTAGE GROVE, WI,
53527-0000**

<https://www.adashunjones.com>

4707 & 4711
County Hwy N,
Cottage Grove, WI,
53527-0000

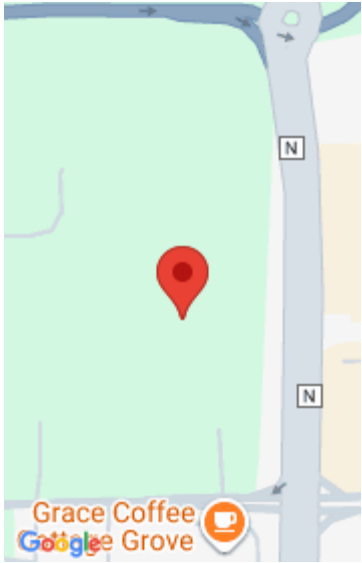


Development Opportunity! Two adjoining wooded parcels totaling 3.011 acres in a prime growth corridor. Currently located in the Town of Cottage Grove and zoned RR-2 but designated as Planned Business in the 2020 Village of Cottage Grove’s Future Land Use Plan. Ideal for a future commercial project (subject to rezoning approval and Village annexation process)....

- Single family
- Active



Kelly Stelzer
Badger Realty Team



AttachedGarageYN: No

PoolPrivateYN: No

Tax Year: 2024

Tax Amount: 3588

Water Source: Well

Sewer: Private Sewer

Agent Email: Kelly@StelzerTeam.com