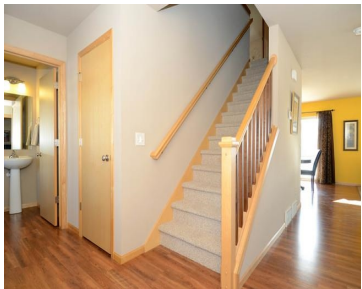


4414 CRADLE HILL DRIVE, WINDSOR, WI, 53532

https://www.adashunjones.com

4414 CRADLE HILL
Drive, Windsor, WI,
53532



\$267,500

Welcome spring in your new home! Spacious 4-bedrooms, plus main level office w/french doors – open kitchen, nice deck & stone patio, wonderful large yard. Extra deep 2-car garage. Great mudroom/laundry area. Unfinished basement for future expansion. Avoid the headaches of building and move right in!

- 4 beds
- 2 baths
- R-3
- Sold
- 2054 sq ft



Mary Duff
Stark Company, REALTORS



Features

GarageYN: Yes

FireplaceYN: No

Lot Features: Corner Lot

Features: Accessible Doors, Accessible Hallway(s), Breakfast Bar, Cable Available, Dryer, Gas, Kitchen Island, Main Level, Walk-in Closet(s), Washer, Water softener inc

Tax Year: 2014

AttachedGarageYN: Yes

PoolPrivateYN: No

Utilities: Cable Available

Above Grade Finished Area, sq ft: 2054

Tax Amount: 4913

Amenities

Waterfront available: No

Amenities: Dishwasher, Dryer, Microwave, Range, Refrigerator, Washer, Water Softener Owned

Sewer: Public Sewer

Cooling:
Central Air

Water Source:
Public

Building Details

NewConstructionYN: No

Basement: Full, Sump Pump

Parking: Attached, Paved

Heating: Forced Air, Natural Gas

Exterior material: Vinyl Siding

Agent Details

Agent Full Name: Mary Duff

Agent Email: mduff@starkhomes.com