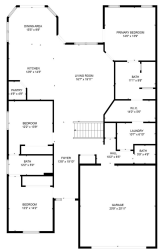


441 LONGWOOD LANE, WRIGHTSTOWN, WI, 54180

https://www.adashunjones.com

441 LONGWOOD  
Lane,  
WRIGHTSTOWN, WI,  
54180



NOT TO SCALE. DIMENSIONS OF EXTERIOR ARE APPROXIMATE. DIMENSIONS OF INTERIOR ARE APPROXIMATE. DIMENSIONS OF EXTERIOR ARE APPROXIMATE.

Stunning and spacious complete zero entry ranch home with zero lot line situated on a .34 acre landscaped setting backing to no homes. Open concept great room w/LVP flooring & cozy built-in electric fireplace. Gourmet kitchen w/center island, granite countertops, walk-in pantry & SS appliances. Primary bedroom suite w/tray ceiling w/barnwood inlay, walk-in closet &...

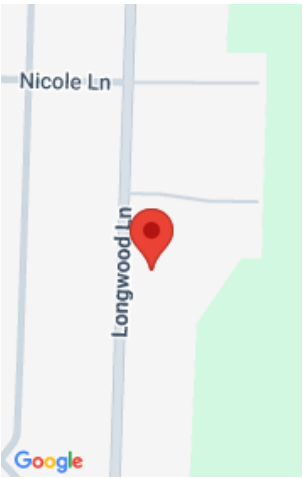


**Julie**  
Todd Wiese Homeselling System, Inc.



**Alex**  
Todd Wiese Homeselling System, Inc.

- 3 beds
- 3 baths
- Residential
- Residential, Single Family Residence
- Active
- 1904 sq ft



---

## Features

<b>GarageYN:</b> No	<b>AttachedGarageYN:</b> No
<b>FireplaceYN:</b> No	<b>PoolPrivateYN:</b> No
<b>Security Features:</b> Security System	<b>Features:</b> At Least 1 Bathtub,Breakfast Bar,Cable Available,Elect Built In-Not Frplc,Hi-Speed Internet Availbl,Kitchen Island,One,Pantry,Split Bedroom,Walk-in Closet(s),Walk-in Shower,Water Softener-Own,Wood/Simulated Wood Fl
<b>Above Grade Finished Area, sq ft:</b> 1904	<b>Tax Amount:</b> 4562
<b>Inclusions:</b> Range, Refrigerator, Dishwasher, Microwave, Fireplace, Washer, Dryer, Dehumidifier, Water softener, Ring Security System	

---

## Amenities

<b>Waterfront available:</b> No	<b>Cooling:</b> Central Air
<b>Amenities:</b> Dishwasher,Dryer,Microwave,Range,Refrigerator,Washer	<b>Water Source:</b> Public
<b>Sewer:</b> Public Sewer	

---

## Room Sizes

Room type	Dimensions	Level
Bedroom 1	15x14	Main
Bedroom 2	12x12	Main
Bedroom 3	12x12	Main
Kitchen	11x13	Main
Living Room	18x21	Main
Other Room	7x9	Main
Other Room 2	10x6	Main

## Building Details

**NewConstructionYN:** No

**Heating:** Forced Air

**Exterior material:** Stone,Vinyl Siding

**ArchitecturalStyle:** Ranch

**Basement:** Full,Full Sz Windows Min 20x24,Stubbed for Bath

**Parking:** Attached

## Agent Details

**Agent Full Name:** Alex C Roup

**Agent Email:** alex@toddwiese.com