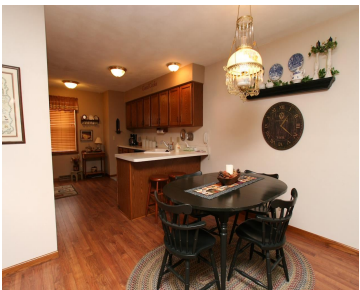


4315 PICKWICK DRIVE, WI, 53546

<https://www.adashunjones.com>

4315 PICKWICK
Drive, WI, 53546

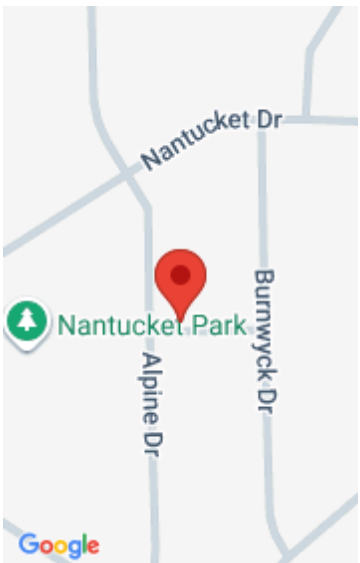


Take a look at this 2 bedroom condo on Janesville’s Eastside. There is plenty of room for everyone in this open floor plan including a sunroom and lower level rec room. The master suite offers privacy, a full bath, and walk in closet. Main level laundry. Tons of extra storage in the lower level.

- 2 beds
- 2 baths
- Condominium,R1
- Sold
- 1280 sq ft



Dave Mansur
Mansur Real Estate LLC



Features

GarageYN: Yes

FireplaceYN: No

Features: Accessible Bedroom, Accessible Full Bath, Breakfast Bar, Main Level, Pantry, Walk-in Closet(s)

Below Grade Finished Area, sq ft: 176

Tax Amount: 2730

AttachedGarageYN: Yes

PoolPrivateYN: No

Above Grade Finished Area, sq ft: 1104

Tax Year: 2013

Inclusions: All window coverings

Amenities

Waterfront available: No

Amenities: Dishwasher, Dryer, Microwave, Range, Refrigerator, Washer, Water Softener Owned

Sewer: Public Sewer

Cooling:
Central Air

Water Source:
Public

Building Details

NewConstructionYN: No

Basement: Finished, Full

Parking: Attached, Garage

Heating: Forced Air, Natural Gas

Exterior material: Vinyl Siding

Agent Details

Agent Full Name: Dave Mansur

Agent Email: dave@davemansur.com