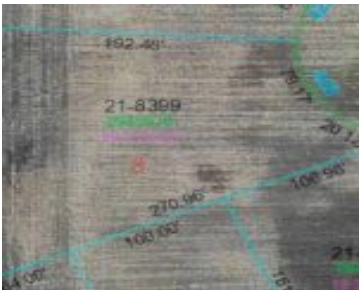
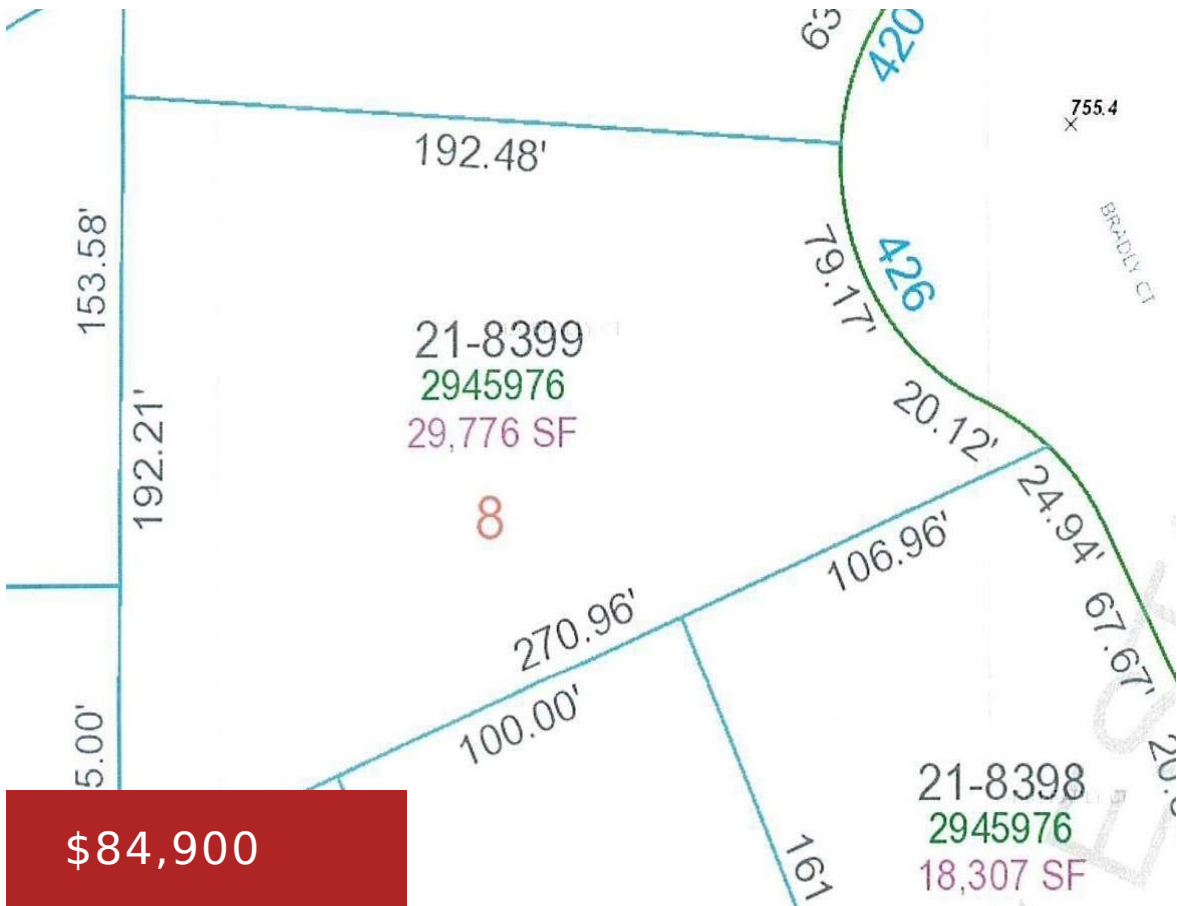


426 BRADLY COURT, GREEN BAY, WI, 54311-0000

https://www.adashunjones.com

426 BRADLY Court,
Green Bay, WI,
54311-0000

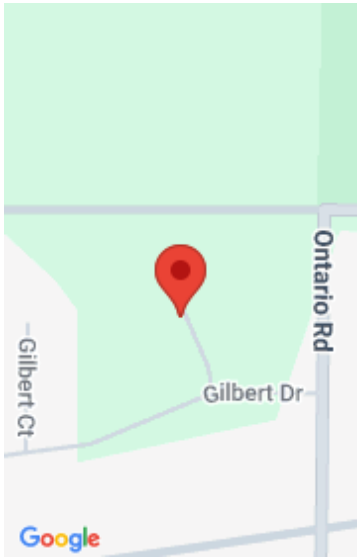


Desirable location to build your Dream Home! Easy highway access nearby. Conveniently located near hospital, YMCA, restaurants & shopping. Within walking distance of Christa McAuliffe Park & soccer fields. Don't miss out on this great opportunity!

- Land
- Residential, Vacant Land/Acreage
- Active



Lisa
Resource One Realty, LLC



Features

GarageYN: No

FireplaceYN: No

Lot Features: Level

Tax Amount: 1460.31

AttachedGarageYN: No

PoolPrivateYN: No

Utilities: Electricity Available, Gas

Amenities

Waterfront available: No

Sewer: Municipal Sewer

Water Source: Municipal/City

Building Details

NewConstructionYN: No

Agent Details

Agent Full Name: Lisa R Parkos-Verhagen

Agent Email: lparkos@resource1gb.com