

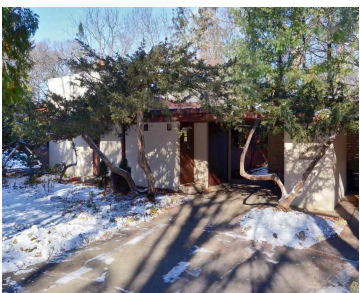
4222 YUMA DRIVE, MADISON, WI, 53711

<https://www.adashunjones.com>

4222 YUMA Drive,
Madison, WI, 53711



\$389,900

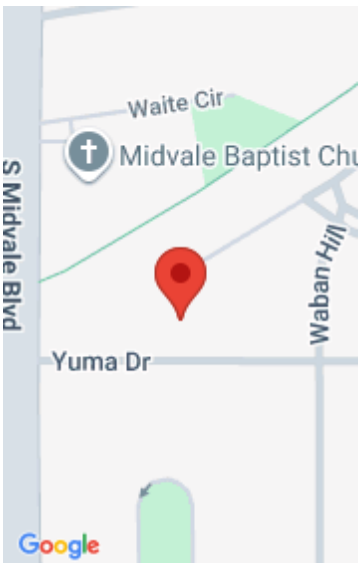


Great opportunity for FLW buffs! Classic Usonian home designed & built by Cary Caraway under the tutelage of Frank L. Wright. Unchanged for 40+ yrs, this home sits on an amazing double-sized lot and features “pecky” cypress walls, copper-hooded fireplaces, SS countertops and terrazzo floors throughout. Large windows overlook the private yard & most bedrooms...

- 3 beds
- 2 baths
- TR-C1
- Sold
- 2112 sq ft



JoAnn Kane
Stark Company, REALTORS



Features

GarageYN: Yes

FireplaceYN: No

Lot Features: Wooded

AttachedGarageYN: Yes

PoolPrivateYN: No

Features: Accessible Bedroom, Accessible Entrance, Accessible Full Bath, Breakfast Bar, Dryer, Kitchen Island, Main Level, Washer, Water softener inc, Wood Burning

Above Grade Finished Area, sq ft: 2112

Tax Year: 2013

Tax Amount: 6725

Amenities

Waterfront available: No

Cooling: Central Air

Amenities: Dryer, Range, Refrigerator, Washer, Water Softener Owned

Water Source: Public

Sewer: Public Sewer

Building Details

NewConstructionYN: No

Heating: Forced Air, Natural Gas

Basement: Exterior Entry, Partial, Walk-Out Access

Exterior material: Wood Siding

Parking: Attached, Carport

Agent Details

Agent Full Name: JoAnn Kane

Agent Email: jkane@starkhomes.com