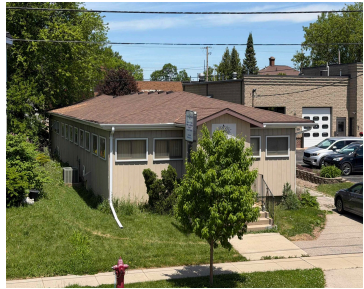


422 BROAD STREET, MENASHA, WI, 54952-3147

<https://www.adashunjones.com>

422 BROAD Street,
MENASHA, WI,
54952-3147

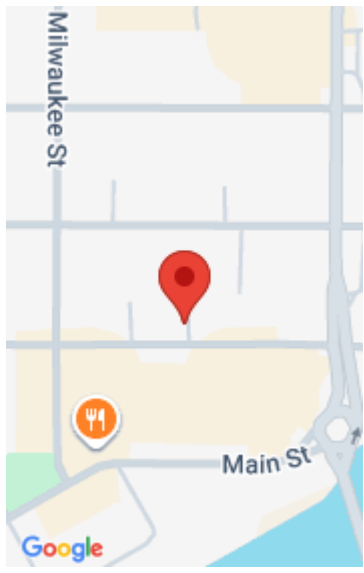


Flexible commercial building near downtown Menasha with convenient Highway 441 access. This approximately 3,500 sq ft building includes multiple office areas, production/work space, kitchen/break area, two public restrooms, loading dock, onsite and street parking, and a full lower level. Currently used as a print shop, the layout may work well for office, service, retail, light...

• 3500 sq ft



Ryan
Century 21 Ace Realty



Features

Price per sq ft: \$71.43

Area, sq ft: 3,500 sq ft

Year built: 1970

Parcel Number: 1-00043-00

AttachedGarageYN: No

Cooling: Central Air

PoolPrivateYN: No

Water Source: Public

Tax Amount: \$2,476

Floors: 1 floor

Lot Size, acres: 0.15

For Sale or Rent: For Sale

GarageYN: No

Heating: Forced Air

FireplaceYN: No

Features: Loading Dock, Offices, Pole Sign

Sewer: Public Sewer

Building Details

NewConstructionYN: No

Exterior Material: Aluminum Siding, Shake Siding

Basement: Full

Parking: On Site, On Street

Agent Details

Agent Full Name: Ryan J. Hawkins

Agent Email: ryan.hawkins@c21ace.com