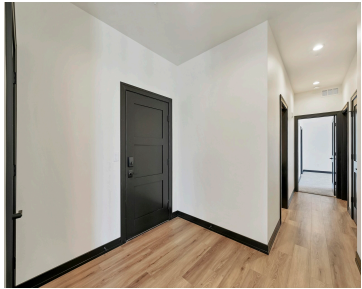
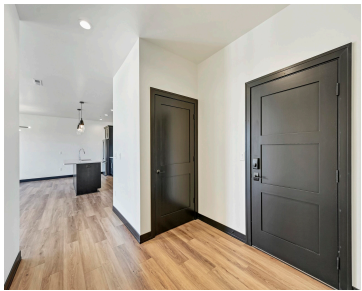


417 ALDON CIRCLE 302, ASHWAUBENON, WI, 54304

https://www.adashunjones.com

417 ALDON Circle
302, Ashwaubenon,
WI, 54304

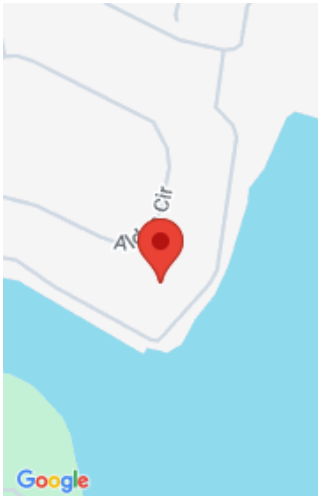


This city-view unit is 1,465 square feet and has a master suite, second bedroom and additional bathroom. There is a large open concept kitchen, dining and living area with a gas fireplace. Include one garage stall in the enclosed parking structure. Available for quick occupancy!



Ryan
NextHome Select Realty

- 2 beds
- 2 baths
- Residential
- Condo,Condominium,PUD
- Closed
- 1465 sq ft



Features

GarageYN: No

FireplaceYN: No

Features: Balcony/Deck/Patio,Gas,Kitchen Island,One,Pantry

Tax Amount: 4954.24

AttachedGarageYN: No

PoolPrivateYN: No

Above Grade Finished Area, sq ft: 1465

Inclusions: Oven/Range, Refrigerator, Dishwasher, Microwave

Amenities

Waterfront available: Yes

Water Body Name: Fox River

Amenities: Dishwasher,Microwave,Range/Oven,Refrigerator

Water Source: Municipal/City

Sewer: Municipal Sewer

Room Sizes

Room type	Dimensions	Level
Bedroom 1	14X14	Main
Bedroom 2	12x11	Main
Kitchen	18x9	Main
Living Or Great Room	14x16	Main
Dining Room	11x13	Main

Building Details

NewConstructionYN: Yes	Heating: Central A/C, Forced Air
Exterior material: Aluminum/Steel,Brick,Fiber Cement	Parking: Attached,Heated,Parking Space,Underground

Agent Details

Agent Full Name: Ryan P Radue	Agent Email: ryan@raduehomes.com
--------------------------------------	---