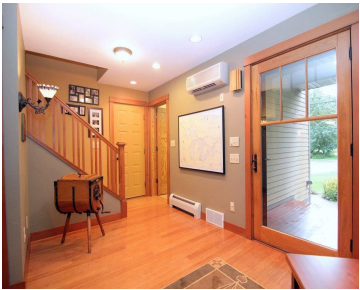


4125 VEITH AVENUE, MADISON, WI, 53704

https://www.adashunjones.com

4125 Veith Avenue,
Madison, WI, 53704



Across from Lake Mendota & backs to the Cherokee Conservancy, this custom-built luxury home offers 2,370 sq/ft. Kitchen features: custom hickory cabinetry, granite counters, Rohl porcelain sink, stainless appliances & 2-tiered breakfast bar. Bamboo, cork & tile flrs, wine fridge, 3-panel oak doors, Meyda & Tiffany lighting, Hardiplank cement siding, 1st floor laundry & state...

- 3 beds
- 2 baths
- SR-C2
- Sold
- 2370 sq ft



Amber Huemmer
RE/MAX Preferred



Features

GarageYN: Yes

AttachedGarageYN: Yes

FireplaceYN: No

PoolPrivateYN: No

WindowFeatures: Skylight(s)

Lot Features: Wooded

Utilities: Cable Available

Features: Accessible Full Bath,Breakfast Bar,Cable Available,Dryer,Jetted bathtub,Main Level,Pantry,Walk-in Closet(s),Washer,Water softener inc

Above Grade Finished Area, sq ft: 2370

Tax Year: 2013

Tax Amount: 9091

Inclusions: All window coverings

Amenities

Waterfront available: Deeded access-No frontage, Lake

Water Body Name: Lake Mendota

Amenities: Dishwasher,Dryer,ENERGY STAR Qualified Appliances,Microwave,Range,Refrigerator,Washer,Water Softener Owned

Water Source: Public

Sewer: Public Sewer

Building Details

NewConstructionYN: No

Heating: Radiant, Other, Natural Gas

Basement: Partial,Sump Pump

Exterior material: Brick,Fiber Cement,Stone

Parking: Attached,Garage Door Opener,Paved

Agent Details

Agent Full Name: Amber Huemmer

Agent Email: Amber@thhtrealty.com