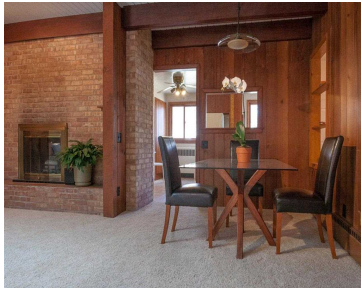


4113 CHIPPEWA DRIVE, MADISON, WI, 53711

https://www.adashunjones.com

4113 Chippewa  
Drive, Madison, WI,  
53711

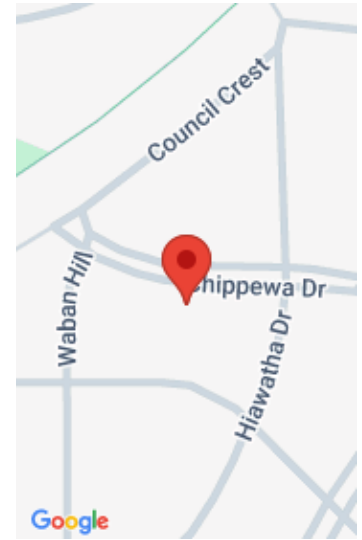


Mid-century beauty in the heart of Nakoma! This warm and inviting 3 bedroom home features a beautiful living space with soaring, beamed ceilings, a great brick fireplace and large windows that highlight the outdoor space. It has a great layout for entertaining – an open living/dining area with bedrooms in a separate wing, and loads...

- 3 beds
- 2 baths
- TR-C1
- Sold
- 2196 sq ft



**Shelly Sprinkman**  
Sprinkman Real Estate



---

## Features

**GarageYN:** Yes

**FireplaceYN:** Yes

**WindowFeatures:** Skylight(s)

**Features:** Accessible Bedroom, Accessible Full Bath, Dryer, Lower Level, Walk-in Closet(s), Washer, Water softener inc, Wood Burning

**Below Grade Finished Area, sq ft:** 650

**Tax Amount:** 6805

**AttachedGarageYN:** Yes

**PoolPrivateYN:** No

**Lot Features:** Near Public Transit

**Above Grade Finished Area, sq ft:** 1546

**Tax Year:** 2013

**Inclusions:** Window/Wall AC, All window coverings

---

## Amenities

**Waterfront available:** No

**Amenities:**

Dishwasher, Disposal, Dryer, Microwave, Range, Refrigerator, Washer, Water Softener Owned

**Water Source:** Public

**Sewer:** Public Sewer

---

## Building Details

**NewConstructionYN:** No

**Basement:** Full

**Parking:** Attached, Paved

**Heating:** Radiant, Natural Gas

**Exterior material:** Wood Siding

---

## Agent Details

**Agent Full Name:** Shelly Sprinkman

**Agent Email:** shelly@sprinkmanrealestate.com