

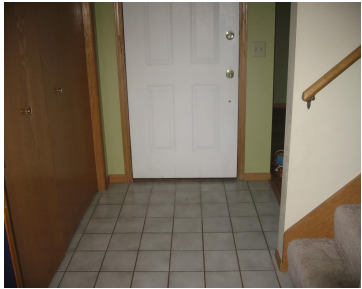
410 JUNCTION ROAD, MADISON, WI, 53717

https://www.adashunjones.com

410 JUNCTION
Road, Madison, WI,
53717



\$182,175

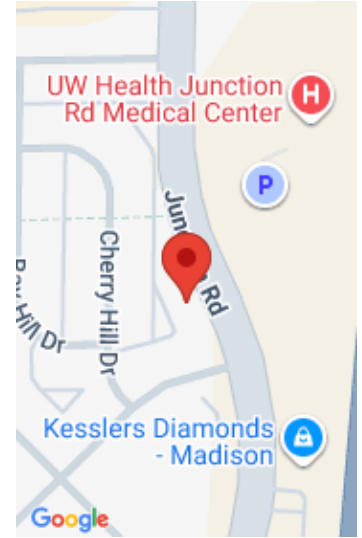


2 Story in a very convenient location with hassle free living. Lawn care, snow removal and trash removal are all included in the association fee of \$165 per month (subject to change with new budget). Lots of storage. Lots of large closets. 3 bedrooms, 2.5 baths, fireplace, finished room in basement, 2 car garage. Kitchen...

- 3 beds
- 2 baths
- PUD
- Sold
- 1830 sq ft



Betty Long
Tri-County Real Estate, Inc.



Features

GarageYN: Yes

FireplaceYN: Yes

Features: Gas,Main Level,Walk-in Closet(s)

Below Grade Finished Area, sq ft: 336

Tax Amount: 4240

AttachedGarageYN: Yes

PoolPrivateYN: No

Above Grade Finished Area, sq ft: 1494

Tax Year: 2013

Amenities

Waterfront available: No

Amenities: Disposal

Sewer: Public Sewer

Cooling: Central Air

Water Source: Public

Building Details

NewConstructionYN: No

Basement: None

Parking: Attached,Paved

Heating: Forced Air, Natural Gas

Exterior material: Vinyl Siding

Agent Details

Agent Full Name: Betty Long

Agent Email: jbjaybee2158@gmail.com