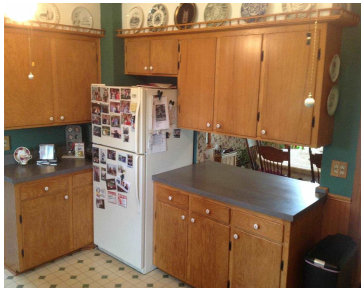


408 PORTAGE STREET, LODI, WI, 53555

https://www.adashunjones.com

408 PORTAGE
Street, Lodi, WI,
53555



VPR \$189,900 to \$219,900. This Beautiful 4 bedroom Victorian sits on a large city lot & has loads of character & charm! There is a large kitchen with plenty of custom cabinetry & all appliances are included. Entertain your guests from one of your beautiful porches or from your large living room. The home features...

- 4 beds
- 2 baths
- Res
- Sold
- 1800 sq ft



Chris Thomas
Badgerland Real Estate & Associates, LLC



Features

GarageYN: Yes

FireplaceYN: No

Features: Gas,Upper Level

Tax Year: 2013

AttachedGarageYN: No

PoolPrivateYN: No

Above Grade Finished Area, sq ft: 1800

Tax Amount: 4832

Amenities

Waterfront available: No

Water Source: Public

Amenities: Dishwasher,Microwave,Range,Refrigerator

Sewer: Public Sewer

Building Details

NewConstructionYN: No

Basement: Partial

Parking: Detached,Paved

Heating: Radiant, Natural Gas

Exterior material: Vinyl Siding

Agent Details

Agent Full Name: Chris Thomas

Agent Email: chris@badgerland.realestate