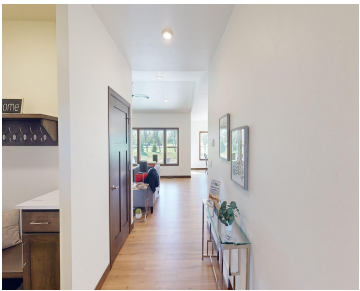


403 TOMS WAY, LUXEMBURG, WI, 54217

https://www.adashunjones.com

403 TOMS Way,
LUXEMBURG, WI,
54217

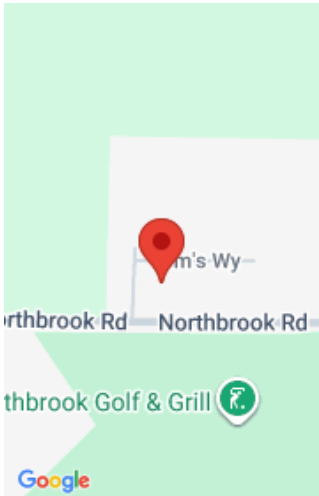


New custom-built ZERO grade condos located directly across from Northbrook Golf & Grill. The “Par” plan has an open concept living and dining space w/ a kitchen breakfast bar, corner pantry, and quartz surfaces in kitchen and baths. Gorgeous master bedroom w/ enormous walk-in closet and large master bath w/ step in shower and dual...

- 2 beds
- 2 baths
- Residential
- Condo,Condominium,Residential
- Closed
- 1494 sq ft



Nikki
Berkshire Hathaway HS Bay Area Realty



Features

GarageYN: No

AttachedGarageYN: No

FireplaceYN: No

PoolPrivateYN: No

Features: At Least 1 Bathtub,Balcony/Deck/Patio,Breakfast Bar,Cable Available,Gas,One,Pantry,Split Bedroom,Vaulted Ceiling

Above Grade Finished Area, sq ft: 1494

Inclusions: Great location across from golf course. Stand alone, zero grade with full basement and egress for expansion. Located next to Northbrook Golf Course.

Amenities

Waterfront available: No **Amenities:** Dishwasher,Disposal,Microwave,Range/Oven,Refrigerator

Water Source: Municipal/City **Sewer:** Municipal Sewer

Room Sizes

Room type	Dimensions	Level
Bedroom 1	13x13	Main
Bedroom 2	11x12	Main
Kitchen	13x11	Main
Living Or Great Room	15x16	Main
Dining Room	11x13	Main
Other Room	7x5	Main

Building Details

NewConstructionYN: Yes
Exterior material: Stone,Vinyl

Heating: Central A/C
Parking: Attached,Garage - 2 Car