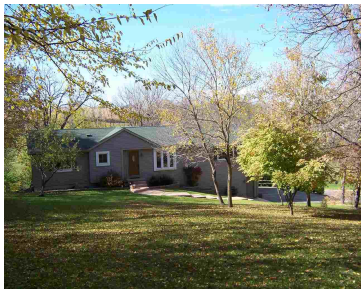


402 LIN MAR DRIVE, BARNEVELD, WI, 53507

https://www.adashunjones.com

402 LIN MAR Drive,  
Barneveld, WI,  
53507



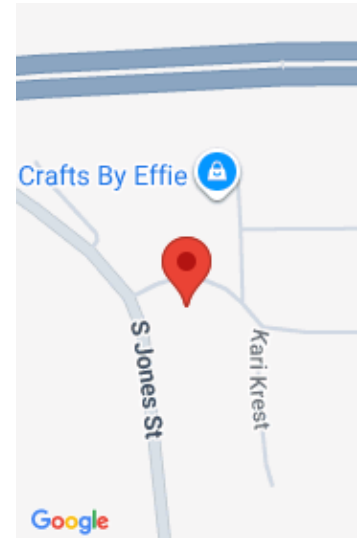
\$183,900

Very nice ranch home on a large wooded lot. Features include kitchen/dinette area with vaulted ceiling, Master bedroom has walk in closet and walk-thru bathroom with jetted tub, lower level includes family room, bedroom with walk-in closet and walkout to yard. New windows installed in 2010 with transferrable warranty on materials. There is a storage...

- 4 beds
- 2 baths
- Res
- Sold
- 2501 sq ft



**Deb Sherven**  
Bender & Associates Realty



---

## Features

**GarageYN:** Yes

**FireplaceYN:** No

**Lot Features:** Wooded

**Above Grade Finished Area, sq ft:** 1676

**Tax Year:** 2013

**AttachedGarageYN:** Yes

**PoolPrivateYN:** No

**Features:** Accessible Bedroom, Accessible Full Bath, Breakfast Bar, Jetted bathtub, Lower Level, Pantry, Vaulted Ceiling(s), Walk-in Closet(s)

**Below Grade Finished Area, sq ft:** 825

**Tax Amount:** 3907

---

## Amenities

**Waterfront available:** No

**Amenities:** Dishwasher, Disposal, Range, Refrigerator

**Sewer:** Public Sewer

**Cooling:** Central Air

**Water Source:** Public

---

## Building Details

**NewConstructionYN:** No

**Basement:** Finished, Full, Full Size Windows/Exposed, Walk-Out Access

**Parking:** Attached, Paved

**Heating:** Forced Air, Natural Gas, Electric

**Exterior material:** Vinyl Siding

---

## Agent Details

**Agent Full Name:** Deb Sherven

**Agent Email:** deb@c21advantage.com