

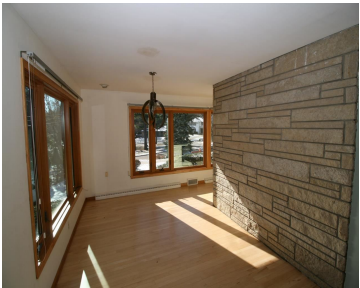
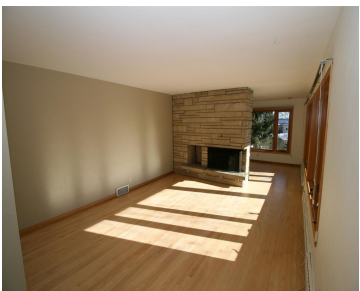
4016 MANDAN CIRCLE, MADISON, WI, 53711

<https://www.adashunjones.com>

4016 Mandan
Circle, Madison, WI,
53711



\$415,000

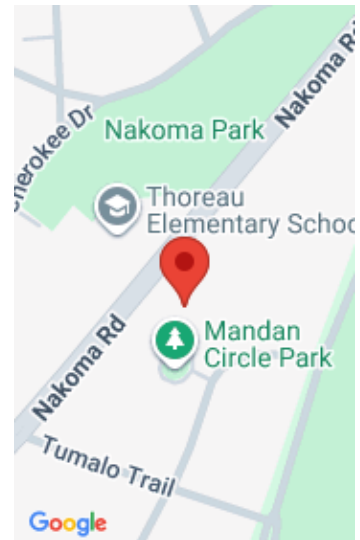


Mid Century Modern on quiet Nakoma cul de sac across from Mandan Circle Park. Spectacular views of the neighborhood from new custom made triple pane windows. Wonderful kitchen with maple cabinets, granite, stainless appliances and large pantry. First floor Family room plus exposed Rec Room in Lower Level. Master suite with walk in closet and...

- 5 beds
- 3 baths
- R2
- Sold
- 2892 sq ft



Ann Cardinale
First Weber, Inc



Features

GarageYN: Yes

FireplaceYN: No

Lot Features: Cul-De-Sac, Wooded

Features: Cable Available, Main Level, Pantry, Water softener inc, Wood Burning

Below Grade Finished Area, sq ft: 408

Tax Amount: 11363

AttachedGarageYN: Yes

PoolPrivateYN: No

Utilities: Cable Available

Above Grade Finished Area, sq ft: 2484

Tax Year: 2013

Inclusions: Humidifier, All window coverings

Amenities

Waterfront available: No

Cooling:
Central Air

Amenities: Dishwasher, Disposal, Microwave, Range, Refrigerator, Water Softener Owned

Water Source:
Public

Sewer: Public Sewer

Building Details

NewConstructionYN: No

Heating: Forced Air, Natural Gas

Basement: Full, Full Size Windows/Exposed, Partially Finished, Walk-Out Access

Exterior material:
Brick, Stone, Wood Siding

Parking: Additional Parking, Attached, Garage Door Opener, Paved, Tandem

Agent Details

Agent Full Name: Ann Cardinale

Agent Email: cardinal@firstweber.com