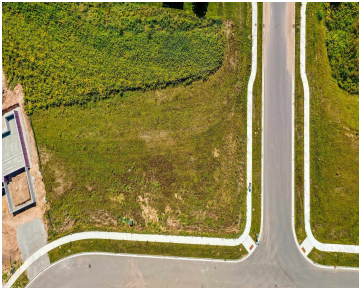


4013 ANTWERP AVENUE 15, GREEN BAY, WI, 54313

https://www.adashunjones.com

4013 ANTWERP
Avenue 15, Green
Bay, WI, 54313

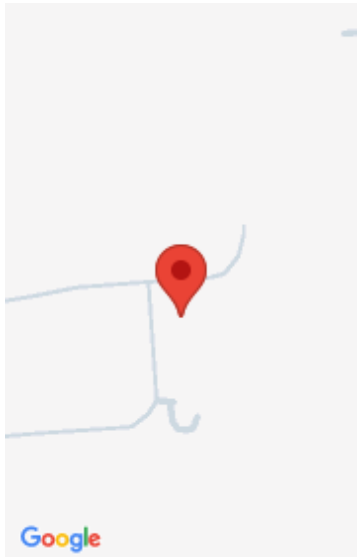


Enjoy peaceful views of nature from your backyard in the Rouse Pointe subdivision. This vacant lot is an ideal spot to build your dream home, offering the quiet charm of rural living with the convenience of shopping and other amenities just a short drive away. Any pictures with lines drawn are approximate.

- Land
- Residential,Vacant Land/Acreage
- Closed



Riley
Expert Real Estate Partners, LLC



Features

GarageYN: No

FireplaceYN: No

Lot Features: Corner Lot, Rural - Subdivision

Tax Amount: 75.93

AttachedGarageYN: No

PoolPrivateYN: No

Utilities: Cable Available, Electricity Available, High Speed Internet, Gas, Telephone Line

Amenities

Waterfront available: No

Sewer: Municipal Sewer

Water Source: Municipal/City

Building Details

NewConstructionYN: No

Agent Details

Agent Full Name: Raleigh A Ostrom

Agent Email: raleigh.ostrom@experthomes.com