

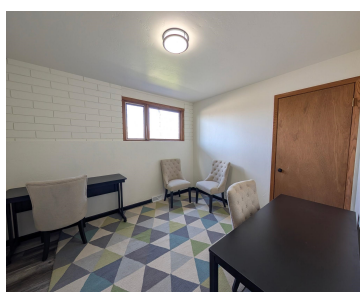
# 400 S LINWOOD AVENUE, APPLETON, WI, 54914

<https://www.adashunjones.com>

400 S LINWOOD  
Avenue, APPLETON,  
WI, 54914



**\$39 /  
month**

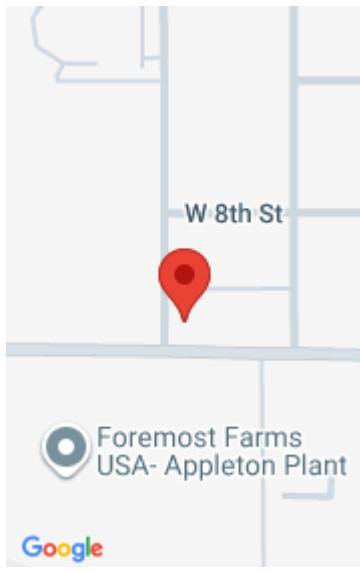


10 x 11.7 single room office space available to rent. Private lower level office in bi-level office building with plenty of light through the daylight windows. Updated flooring and paint, electronic lock for access to building and unit. Space accommodates 2 workstations comfortably. Building offers parking on site and street, common bathrooms, shared meeting space/tech...

• 5546 sq ft



**Eric**  
EXIT Elite Realty - Appleton



---

## Features

**Lease Amount, per sq ft:** \$4

**Area, sq ft:** 5,546 sq ft

**Year built:** 1963

**Parcel Number:** 313000700

**AttachedGarageYN:** No

**Cooling:** None

**PoolPrivateYN:** No

**Sewer:** Public Sewer

**Leasable Area, sq ft:** 117

**Lot Size, acres:** 0.19

**For Sale or Rent:** For Sale

**GarageYN:** No

**Heating:** Forced Air

**FireplaceYN:** No

**Water Source:** Public

---

## Building Details

**NewConstructionYN:** No

**Basement:** Full

**Exterior Material:** Brick, Vinyl Siding **Parking:** Common, On Site, On Street, Paved

---

## Agent Details

**Agent Full Name:** Eric J. Muller

**Agent Email:** eric.muller@exitelitewi.com