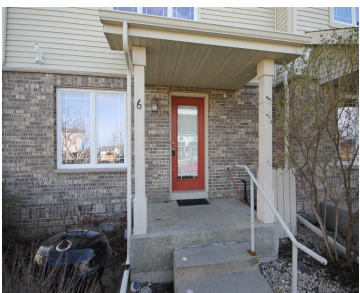


3936 MAPLE GROVE DRIVE, WI, 53719

https://www.adashunjones.com

3936 MAPLE GROVE
Drive, WI, 53719



\$141,900

This stylishly updated Spring Creek END UNIT TH shines! With stainless appliances, brand new speckled plush carpet, fresh paint throughout & updated lighting, this 2 bed, 2.5 bath condo truly stands out from the competition. The floor plan also features an open main level, private laundry, private entry & underground parking. The location is premium...

- 2 beds
- 2 baths
- Condominium,Res
- Sold
- 1298 sq ft



Eric Hansen
Stark Company, REALTORS



Features

GarageYN: No

FireplaceYN: No

Lot Features: Near Public Transit

Features: Breakfast Bar,Pantry,Storage,Upper Level,Walk-in Closet(s)

Tax Year: 2014

Inclusions: All window coverings

AttachedGarageYN: No

PoolPrivateYN: No

Utilities: Cable Available

Above Grade Finished Area, sq ft: 1298

Tax Amount: 2960

Amenities

Waterfront available: No

Amenities:

Dishwasher,Disposal,Dryer,Microwave,Range,Refrigerator,Washer,Water Softener Owned

Sewer: Public Sewer

Cooling:
Central Air

Water Source:
Public

Building Details

NewConstructionYN: No

Exterior material: Brick,Stone,Vinyl Siding

Heating: Forced Air, Natural Gas

Parking: Assigned,Garage Door Opener,Heated Garage,Underground

Agent Details

Agent Full Name: Eric Hansen

Agent Email: eric@hansenhometeam.com