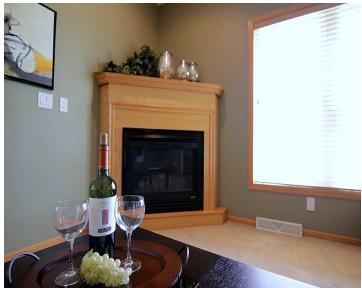
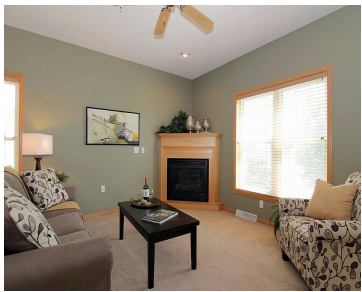
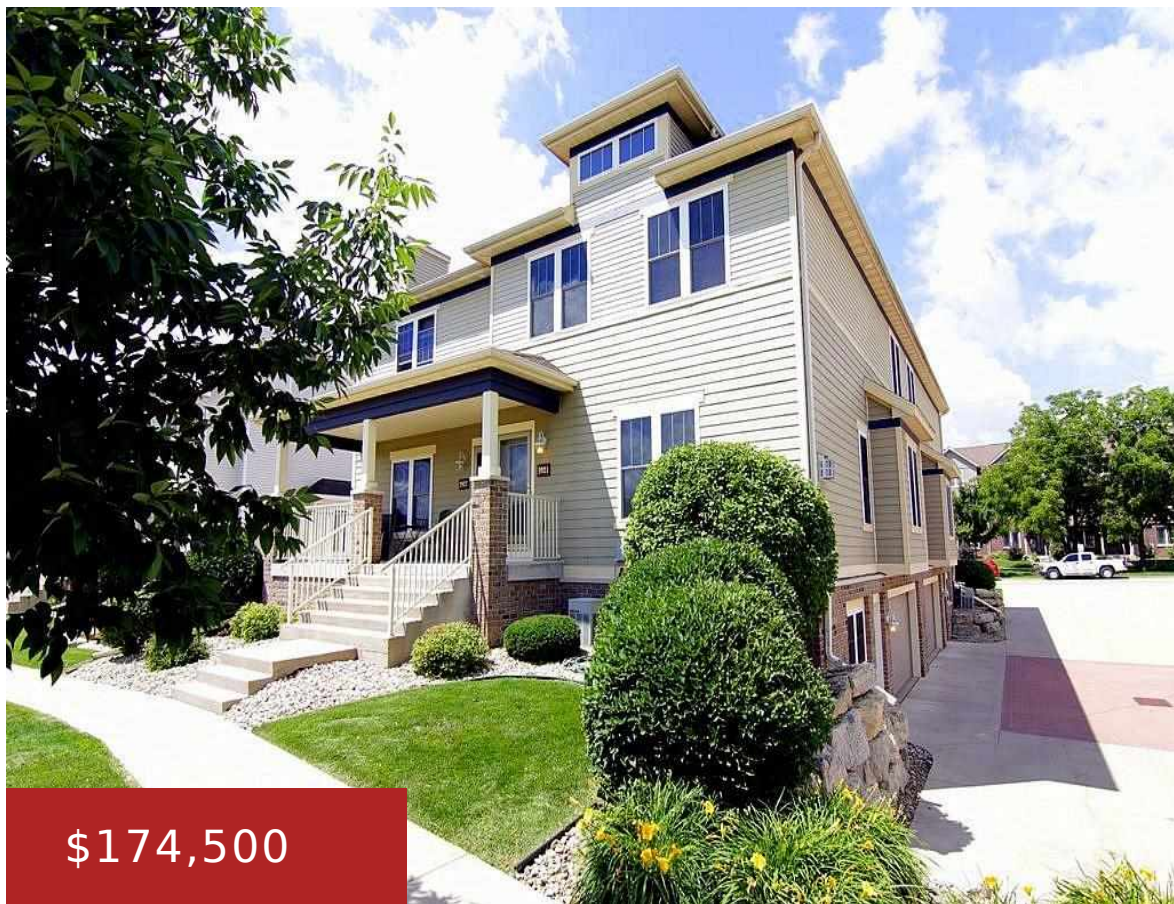


3921 MAPLE GROVE DRIVE, WI, 53719

<https://www.adashunjones.com>

3921 Maple Grove Drive, WI, 53719



\$174,500

This beautiful 1800 sq ft condominium home is nestled in a desirable area of West Madison known for it's neighborhoods, family-friendly conveniences, and ideal location. Nearby grocery, super target, schools, parks, movie theater, health clubs, spas, & restaurants. You'll love the home's large kitchen & flexible, open layout perfect for socializing. Huge master suite with...

- 3 beds
- 2 baths
- Condominium,PUDSIP
- Sold
- 1832 sq ft



Dan Chin
Keller Williams Realty



Features

GarageYN: Yes

FireplaceYN: No

Lot Features: Near Public Transit

Features: Accessible Hallway(s),Breakfast Bar,Gas,Main Level,Vaulted Ceiling(s),Walk-in Closet(s)

Below Grade Finished Area, sq ft: 300

Tax Amount: 3633

AttachedGarageYN: Yes

PoolPrivateYN: No

Utilities: Cable Available

Above Grade Finished Area, sq ft: 1532

Tax Year: 2013

Inclusions: All window coverings,Freezer

Amenities

Waterfront available: No

Amenities: Dishwasher,Disposal,Dryer,ENERGY STAR Qualified Appliances,Microwave,Range,Refrigerator,Washer,Water Softener Owned

Sewer: Public Sewer

Cooling:
Central Air

Water Source: Public

Building Details

NewConstructionYN: No

Basement: Daylight,Finished,Partial,Walk-Out Access

Parking: Attached,Garage,Garage Door Opener,Tandem

Heating: Forced Air, Natural Gas

Exterior material:
Brick,Other,Stone,Vinyl Siding

Agent Details

Agent Full Name: Dan Chin

Agent Email: dan@danchinhomes.com