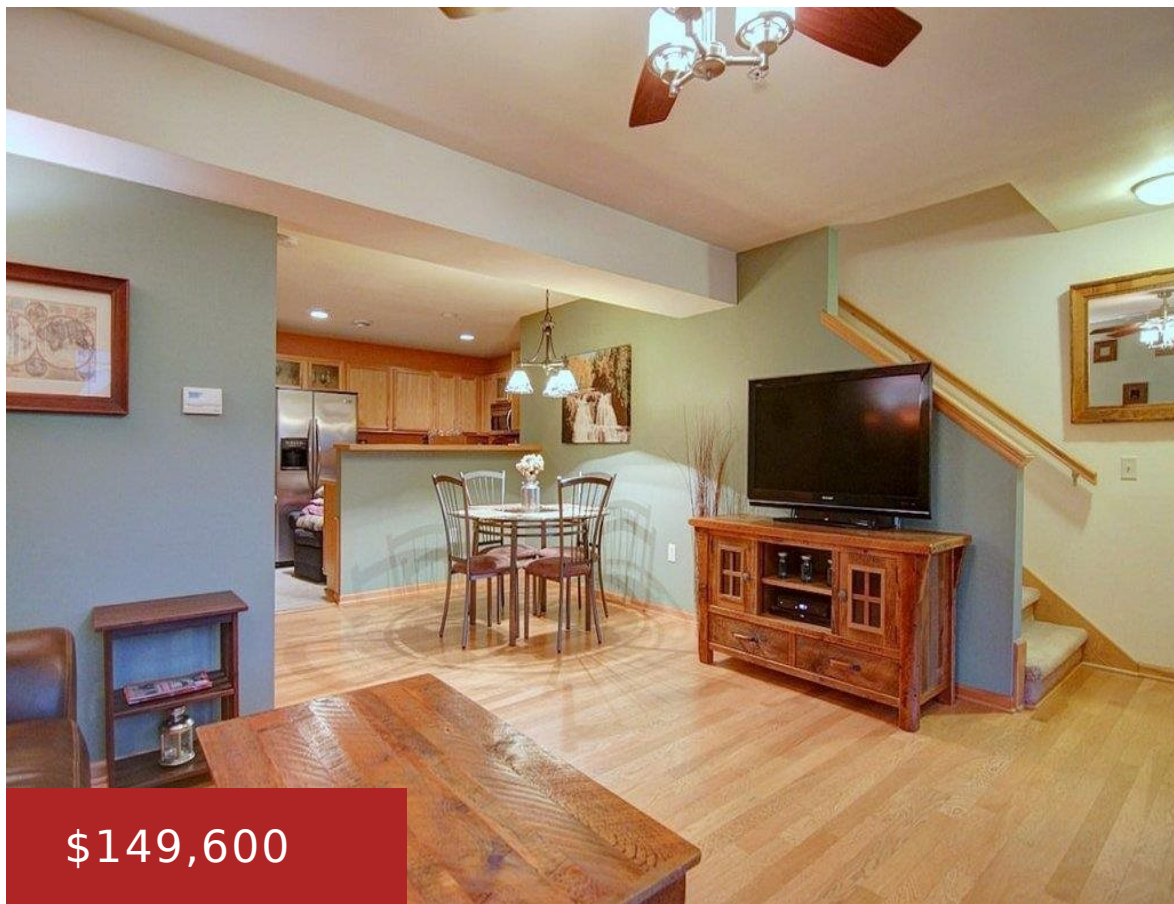


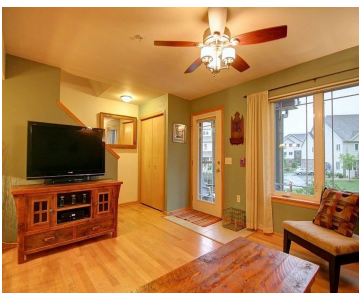
3902 MAPLE GROVE DRIVE, WI, 53719

<https://www.adashunjones.com>

3902 MAPLE GROVE
Drive, WI, 53719



\$149,600



This stylishly updated Spring Creek townhouse shines! Upgrades to this 2 bed, 2.5 bath condo include laminate wood floors, stainless appliances, front load washer/dryer, granite counters, complete lighting package & ceiling fans in living room/all bedrooms. Condo also features an open floor plan, office/study, private entrance & 2 underground parking stalls. Location is excellent as...

- 2 beds
- 2 baths
- Condominium,PD
- Sold
- 1741 sq ft



Eric Hansen
Stark Company, REALTORS



Features

GarageYN: Yes

FireplaceYN: No

Lot Features: Near Public Transit

Features: Breakfast Bar,Storage,Upper Level

Tax Year: 2013

Inclusions: All window coverings

AttachedGarageYN: Yes

PoolPrivateYN: No

Utilities: Cable Available

Above Grade Finished Area, sq ft: 1741

Tax Amount: 2996

Amenities

Waterfront available: No

Cooling: Central Air

Amenities: Dishwasher,Disposal,Microwave,Range,Refrigerator,Washer **Water Source:** Public

Sewer: Public Sewer

Building Details

NewConstructionYN: No

Basement: None

Heating: Forced Air, Natural Gas

Exterior material:
Brick,Stone,Vinyl Siding

Parking: Assigned,Attached,Garage,Garage Door
Opener,Underground

Agent Details

Agent Full Name: Eric Hansen

Agent Email: eric@hansenhometeam.com