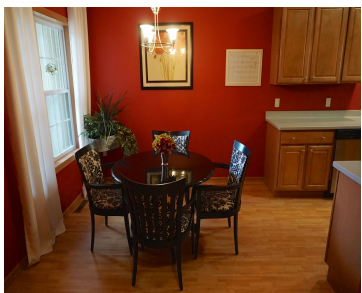


3861 MAPLE GROVE DRIVE, WI, 53719
<https://www.adashunjones.com>

**3861 MAPLE GROVE
Drive, WI, 53719**



\$189,900

No showing until 5/3. Beautifully maintained, nicely upgraded townhouse-style condo on Madison's West side! Great floor plan w/high ceilings, 42" upper cabinets, solid surface counters, eat in kitchen plus a formal dining room, powder room, living room w/gas fireplace plus a large lower level family rm w/wet bar and surround sound wiring! 3 spacious bedrooms...

- 3 beds
- 2 baths
- Condominium,SR-V2
- Sold
- 2205 sq ft



Noelle Fox
MadisonFlatFeeHomes.com



Features

GarageYN: Yes

FireplaceYN: Yes

Utilities: Cable Available

Above Grade Finished Area, sq ft: 1769

Tax Year: 2014

Inclusions: Some Window Coverings

AttachedGarageYN: Yes

PoolPrivateYN: No

Features: Gas,Upper Level,Walk-in Closet(s)

Below Grade Finished Area, sq ft: 436

Tax Amount: 3783

Amenities

Waterfront available: No

Amenities:

Dishwasher,Disposal,Dryer,Microwave,Range,Refrigerator,Washer,Water Softener
Owned

Sewer: Public Sewer

Cooling:
Central Air

**Water
Source:**
Public

Building Details

NewConstructionYN: No

Basement: Bath/Stubbed,Full,Partially Finished

Parking: Attached,Garage,Garage Door Opener

Heating: Forced Air, Natural Gas

Exterior material: Brick,Stone,Vinyl Siding

Agent Details

Agent Full Name: Noelle Fox

Agent Email: Noelle@madisonflatfeehomes.com