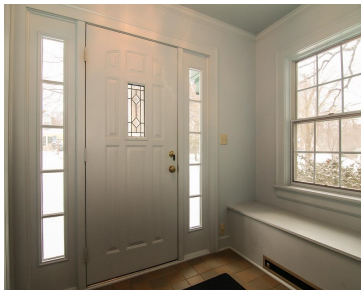


3813 COUNCIL, MADISON, WI, 53711-2922

https://www.adashunjones.com

3813 Council,
Madison, WI,
53711-2922

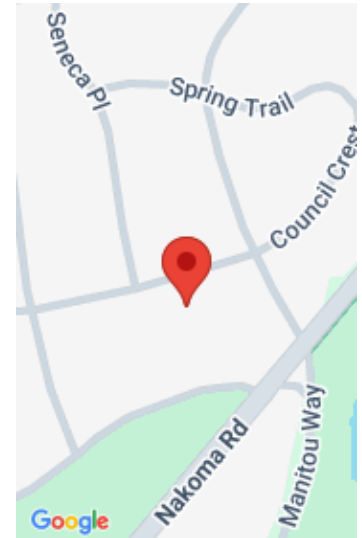


Life is Better in Nakoma! Classic Dutch Colonial nestled in a desirable location in the heart of the neighborhood. The over 3,000 sq ft include a wonderfully sunny kitchen addition, formal LR/DR, full master suite, sun room, beautifully updated baths, finished attic and exposed walk out LL. Great bones, great light, great house! Seller will...

- 4 beds
- 3 baths
- Res
- Sold
- 3038 sq ft



Ann Cardinale
First Weber, Inc



Features

GarageYN: Yes

FireplaceYN: No

WindowFeatures: Skylight(s)

Utilities: Cable Available

Above Grade Finished Area, sq ft:
2588

Tax Year: 2014

Inclusions: All window coverings

AttachedGarageYN: No

PoolPrivateYN: No

Lot Features: Wooded, Near Public Transit

Features: Cable Available, Lower Level, Pantry, Vaulted Ceiling(s), Walk-in Closet(s), Water softener inc, Wood Burning, Wood Burning Stove

Below Grade Finished Area, sq ft: 450

Tax Amount: 10922

Amenities

Waterfront available: No

Amenities: Dishwasher, Disposal, ENERGY STAR Qualified Appliances, Freezer, Range, Refrigerator, Water Softener Owned

Sewer: Public Sewer

Cooling: Central Air

Water Source: Public

Building Details

NewConstructionYN: No

Heating: Forced Air, Natural Gas

Basement: Full, Partially Finished, Walk-Out Access **Exterior material:** Wood Siding

Parking: Detached, Garage Door Opener, Paved

Agent Details

Agent Full Name: Ann Cardinale

Agent Email: cardinal@firstweber.com