

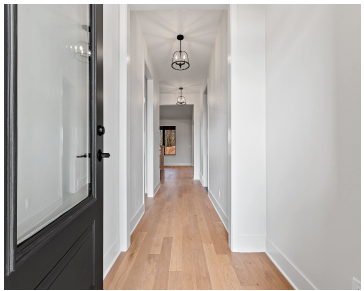
374 FARMHOUSE LANE, COMBINED LOCKS, WI, 54113

https://www.adashunjones.com

374 FARMHOUSE  
Lane, COMBINED  
LOCKS, WI, 54113



\$665,000

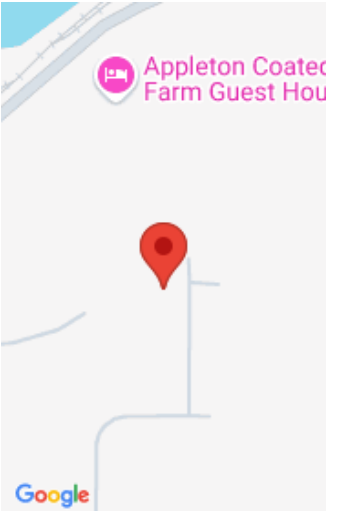


Be among the first to call Riverview Ridge Place home! This home offers 2,600+ sqft of luxuriously finished space. Professionally designed + expertly constructed, you will be blown away by the quality and attention to detail GRIFFIN BUILDERS has been delivering for generations. The open floor plan features a large kitchen island, step in pantry,...



Jenny  
LPT Realty

- 3 beds
- 3 baths
- Residential
- Residential
- Closed
- 2637 sq ft



---

## Features

<b>GarageYN:</b> No	<b>AttachedGarageYN:</b> No
<b>FireplaceYN:</b> No	<b>PoolPrivateYN:</b> No
<b>ExteriorFeatures:</b> Patio	<b>Features:</b> Gas,Kitchen Island,One,Pantry,Split Bedroom,Walk-in Closet(s),Walk-in Shower,Wood/Simulated Wood Fl
<b>Above Grade Finished Area, sq ft:</b> 1775	<b>Below Grade Finished Area, sq ft:</b> 862
<b>Inclusions:</b> Refrigerator, Double Oven, Gas Range, Dishwasher	<b>Exclusions:</b> Seller's Personal Property.

---

## Amenities

<b>Waterfront available:</b> No	<b>Amenities:</b> Dishwasher,Range/Oven,Refrigerator
<b>Water Source:</b> Municipal/City	<b>Sewer:</b> Municipal Sewer

---

## Room Sizes

Room type	Dimensions	Level
Bedroom 1	14x15	Main
Bedroom 2	13x11	Main
Bedroom 3	13x11	Lower
Kitchen	13x12	Main
Living Or Great Room	18x17	Main
Dining Room	13x13	Main
Other Room	6x11	Main
Other Room 2	6x7	Main
Other Room 3	18x16	Lower
Other Room 4	13x19	Lower

## Building Details

**NewConstructionYN:** Yes  
**Basement:** Full,Partial Fin. Contiguous  
**Parking:** Attached

**Heating:** Central A/C, Forced Air  
**Exterior material:** Patio,Vinyl

---

## Agent Details

**Agent Full Name:** Jenny M Landro

**Agent Email:** jennifer@landrorealty.com