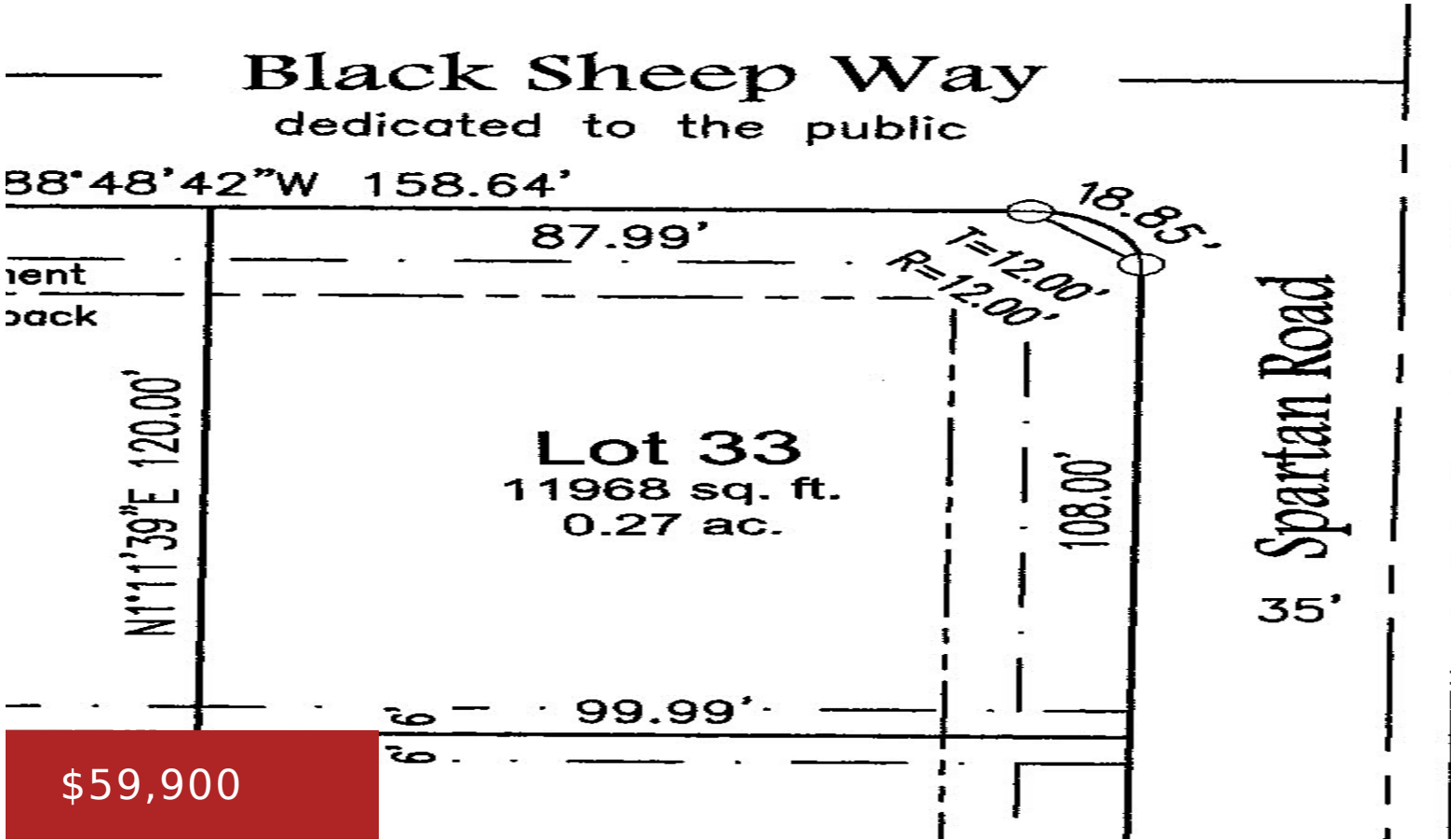


3594 BLACK SHEEP WAY, GREEN BAY, WI, 54311-8948

<https://www.adashunjones.com>

3594 BLACK SHEEP
Way, GREEN BAY,
WI, 54311-8948

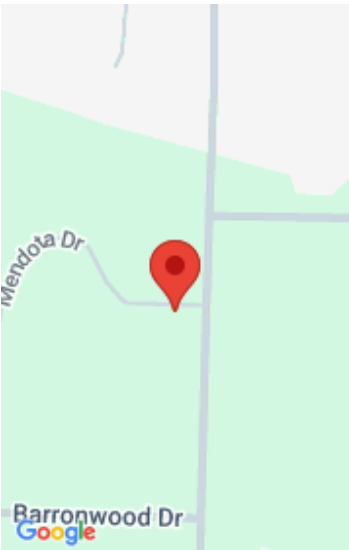


Eaton Heights is expanding! Nestled against the Mahon Creek you'll find 19 oversized lots to build your dream home. Lots range in size from approximately 1/4 acre to 1/2 acre and widths at setback to accommodate a slightly larger home. Some lots offer the opportunity for large daylight windows in the lower level. Restrictive covenants...

- Land
- PUD,Residential,Vacant Land/Acreage
- Active



Tina
Coldwell Banker Real Estate Group



Features

GarageYN: No

FireplaceYN: No

Lot Features: Corner Lot, Level

AttachedGarageYN: No

PoolPrivateYN: No

Utilities: Electricity Available

Amenities

Waterfront available: No

Sewer: Public Sewer

Water Source: Public

Building Details

NewConstructionYN: No

Agent Details

Agent Full Name: Tina Bunker

Agent Email: tina@tinabunker.com