

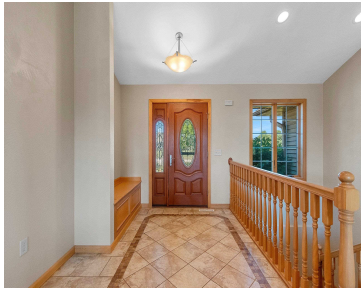
3561 GRAND MEADOWS CROSSING, NEENAH, WI,  
54956

https://www.adashunjones.com

3561 GRAND  
MEADOWS  
Crossing, NEENAH,  
WI, 54956



\$640,000

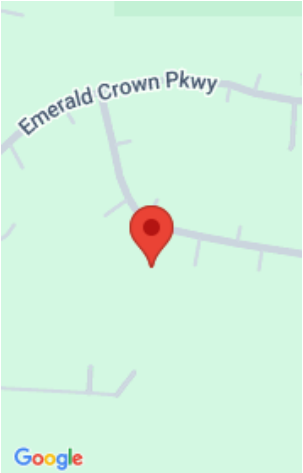


Set on 1.22 acres in the Town of Clayton, this striking ranch blends thoughtful design with everyday ease. Vaulted ceilings and an open concept design set the stage, anchored by a kitchen with granite countertops and generous cabinetry. The split-bedroom layout offers added privacy, with the primary suite tucked away featuring a walk-in closet, dual...



Jenny  
LPT Realty

- 4 beds
- 3 baths
- Residential
- Residential,Single Family Residence
- Active
- 2840 sq ft



---

# Features

<b>GarageYN:</b> No	<b>AttachedGarageYN:</b> No
<b>FireplaceYN:</b> No	<b>PoolPrivateYN:</b> No
<b>PoolFeatures:</b> Above Ground	<b>Features:</b> At Least 1 Bathtub,Breakfast Bar,Gas,Kitchen Island,Pantry,Pellet Stove,Split Bedroom,Three,Vaulted Ceiling(s),Walk-in Closet(s),Walk-in Shower,Water Softener-Own,Wood Burning,Wood/Simulated Wood FI
<b>Above Grade Finished Area, sq ft:</b> 2000	<b>Below Grade Finished Area, sq ft:</b> 840
<b>Tax Amount:</b> 5687.18	<b>Inclusions:</b> Dishwasher, Oven/Range, Refrigerator, Microwave, Washer, Dryer, Speakers Mounted on Walls.
<b>Exclusions:</b> Seller's Personal Property. Negotiable: Patio Furniture, Pool Heater, Dining Room Set, Lawn Tractor, Home Gym Equipment, TVs, Chess Table.	

---

# Amenities

<b>Waterfront available:</b> No	<b>Cooling:</b> Central Air
<b>Amenities:</b> Dishwasher,Dryer,Microwave,Range,Refrigerator,Washer	<b>Water Source:</b> Well
<b>Sewer:</b> Conventional Septic	

---

# Room Sizes

Room type	Dimensions	Level
Bedroom 1	14x15	Main
Bedroom 2	11x12	Main
Bedroom 3	11x12	Main
Bedroom 4	9x11	Lower
Family Room	25x14	Lower
Kitchen	12x12	Main
Living Room	15x21	Main
Dining Room	13x7	Main
Other Room	7x7	Main
Other Room 2	14x14	Lower

## Building Details

**NewConstructionYN:** No

**Heating:** Forced Air

**Exterior material:** Brick,Vinyl Siding

**ArchitecturalStyle:** Ranch

**Basement:** Finished,Full,Sump Pump

**Parking:** Attached

---

## Agent Details

**Agent Full Name:** Jenny M Landro

**Agent Email:** jennifer@landrorealty.com