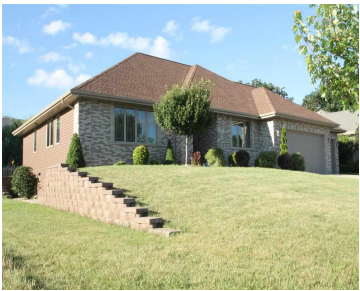


3523 CRICKETEER DRIVE, JANESVILLE, WI, 53546

https://www.adashunjones.com

3523 CRICKETEER  
Drive, Janesville,  
WI, 53546



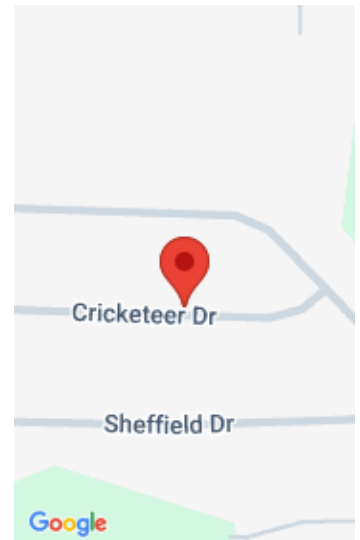
\$349,900

Gorgeous Executive home with in-law suite possibility! Wonderful Open Great Room design w/gas FP, all Granite surfaces, Breakfast bar, Stainless steel appl, Tile & Oak flooring. Sunroom overlooking backyard and Composite Deck. MBR Suite w/tray ceiling, Jetted tub, his & her vanities & lg WIC. Exposed LL w/Garage access and 2nd Full Kitchen! 1 Large...

- 4 beds
- 3 baths
- R
- Sold
- 3844 sq ft



**Kimberly Sharp**  
Century 21 Affiliated



---

## Features

**GarageYN:** Yes

**FireplaceYN:** No

**Features:** Accessible Bedroom, Accessible Full Bath, Breakfast Bar, Gas, Jetted bathtub, Main Level, Walk-in Closet(s), Water softener inc

**Below Grade Finished Area, sq ft:** 1800

**Tax Amount:** 6221

**AttachedGarageYN:** Yes

**PoolPrivateYN:** No

**Above Grade Finished Area, sq ft:** 2044

**Tax Year:** 2012

**Inclusions:** Play Structure

---

## Amenities

**Waterfront available:** No

**Cooling:**  
Central Air

**Amenities:** Dishwasher, Disposal, Microwave, Range, Refrigerator, Water Softener Owned

**Water Source:**  
Public

**Sewer:** Public Sewer

---

## Building Details

**NewConstructionYN:** No

**Heating:** Forced Air, Natural Gas

**Basement:** Finished, Full, Full Size Windows/Exposed

**Exterior material:** Brick, Stone, Vinyl Siding

**Parking:** Attached, Paved

---

## Agent Details

**Agent Full Name:** Kimberly Sharp

**Agent Email:** kimsharp@c21affiliated.com