

3506 COUNTRY GROVE DRIVE, MADISON, WI, 53719

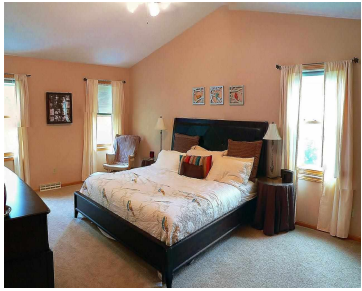
https://www.adashunjones.com

3506 COUNTRY GROVE Drive,  
Madison, WI, 53719



\$309,000

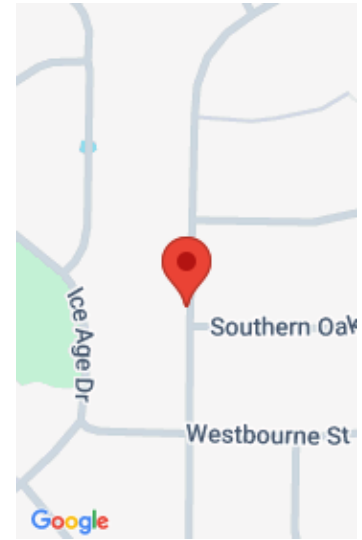
Great 2 story with over 2700 Square feet of living space. New carpeting, paint, tile, lighting, furnace, H2O Heater and stainless steel appliances. Master suite has vaulted ceilings, spacious feel with a dedicated whirlpool bath, stand alone shower and walk in closet. First floor features large kitchen that flows into the living spaces. The family...



- 4 beds
- 2 baths
- SR-C1
- Sold
- 2742 sq ft



**Mark Williams**  
Howard and Williams, INC.



---

## Features

**GarageYN:** No

**AttachedGarageYN:** No

**FireplaceYN:** No

**PoolPrivateYN:** No

**Utilities:** Cable Available

**Features:** Breakfast Bar,Cable Available,Dryer,Jetted bathtub,Lower Level,Pantry,Vaulted Ceiling(s),Walk-in Closet(s),Washer,Water softener inc,Wet Bar,Wood Burning

**Above Grade Finished Area, sq ft:** 2146

**Below Grade Finished Area, sq ft:** 596

**Tax Year:** 2013

**Tax Amount:** 6113

**Inclusions:** Humidifier,All window coverings,Play Structure

---

## Amenities

**Waterfront available:** No

**Water Body Name:** -----

**Cooling:** Central Air

**Amenities:** Dishwasher,Disposal,Dryer,ENERGY STAR Qualified Appliances,Microwave,Range,Refrigerator,Washer,Water Softener Owned

**Water Source:** Public

**Sewer:** Public Sewer

---

## Building Details

**NewConstructionYN:** No

**Heating:** Forced Air, Natural Gas

**Basement:** Finished,Full,Partially Finished

**Exterior material:** Brick,Stone,Vinyl Siding

**Parking:** Garage Door Opener,Paved

---

## Agent Details

**Agent Full Name:** Mark Williams

**Agent Email:** HowardandWilliams@gmail.com