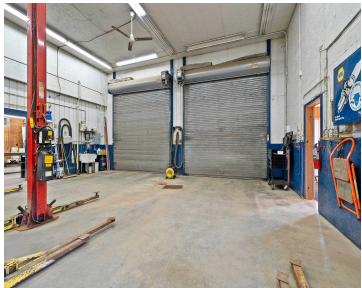
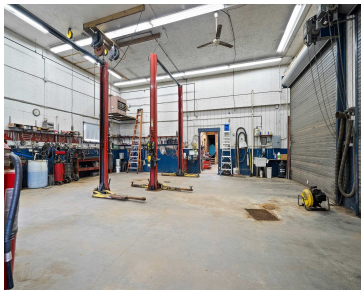
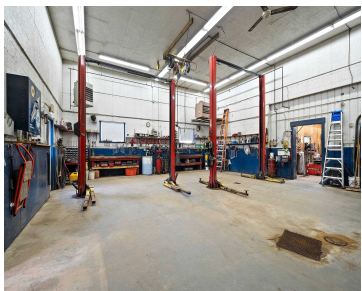


3461 US 2 HIGHWAY, FLORENCE, WI, 54121

https://www.adashunjones.com

3461 US 2 Highway,  
FLORENCE, WI,  
54121



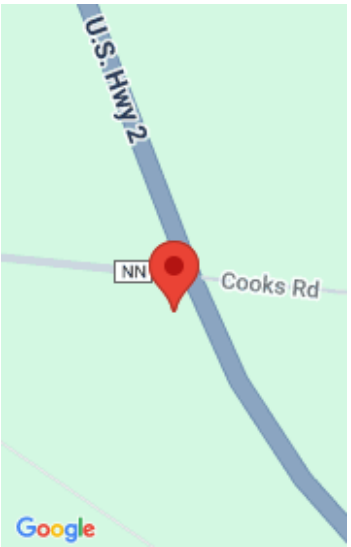
\$225,000

Endless possibilities with this versatile 5.6-acre property! Previously an automotive shop, it features 4 large stalls, 2 offices, 2 hoists, and a wide range of tools and machines included! Located on a busy highway with lots of road frontage. Plenty of space for storage or new business ideas. Whether you're continuing in auto repair or...

- Commercial Sale
- COMMERCIAL,Real Estate
- Active
- 3153 sq ft



**Lydia**  
Symes Realty, LLC



---

## Features

**GarageYN:** No

**FireplaceYN:** No

**Tax Amount:** 1129.85

**Exclusions:** Dumpster (rented), computer and monitor, UTV tracks, orange ladder and aluminum ladder.

**AttachedGarageYN:** No

**PoolPrivateYN:** No

**Inclusions:** Tools, machines, furniture, fridge, hoists, tire machine, tire balancer, air compressor, security system, waste oil heater, and much more.

---

## Amenities

**Waterfront available:** No

**Water Source:** Well

**Sewer:** Conventional Septic

---

## Building Details

**NewConstructionYN:** No **Heating:** Wall Unit(s)

**Basement:** None

**Exterior material:** Shake Siding, Vinyl Siding

**Parking:** Gravel, On Site

---

## Agent Details

**Agent Full Name:** Lydia E Francois

**Agent Email:** lydia@symesrealty.com