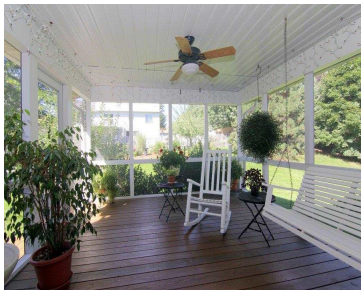


3402 COUNTRY GROVE DRIVE, MADISON, WI, 53719

https://www.adashunjones.com

3402 Country
Grove Drive,
Madison, WI, 53719



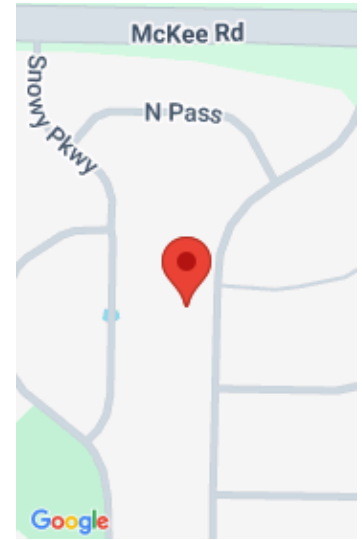
\$325,000

Original owner has maintained this wonderful 2-story! Sellers have enjoyed the open concept kitchen/familyrm w/wood fp, and relaxing on the screen porch overlooking the beautifully landscaped yard. Main level bdrm w/access to full bath, plus spacious kitchen w/island, breakfast bar & walkin pantry. Large owner’s suite has walk in closet, whirlpool tub, shower and double...

- 4 beds
- 3 baths
- Res
- Sold
- 2510 sq ft



Lisa Mohar
First Weber Inc



Features

GarageYN: Yes

AttachedGarageYN: Yes

FireplaceYN: Yes

PoolPrivateYN: No

Utilities: Cable Available

Features: Accessible Bedroom, Accessible Full Bath, Breakfast Bar, Cable Available, Jetted bathtub, Kitchen Island, Main Level, Pantry, Walk-in Closet(s), Water softener inc, Wood Burning

Above Grade Finished Area, sq ft: 2510

Tax Year: 2014

Tax Amount: 7623

Inclusions: Some Window Coverings

Amenities

Waterfront available: No

Cooling:
Central Air

Amenities: Dishwasher, Disposal, Microwave, Range, Refrigerator, Water Softener Owned

Water Source:
Public

Sewer: Public Sewer

Building Details

NewConstructionYN: No

Heating: Forced Air, Natural Gas

Basement: Bath/Stubbed, Full, Full Size Windows/Exposed **Exterior material:** Vinyl Siding

Parking: Attached, Garage Door Opener, Paved

Agent Details

Agent Full Name: Lisa Mohar

Agent Email: lisamohar@firstweber.com