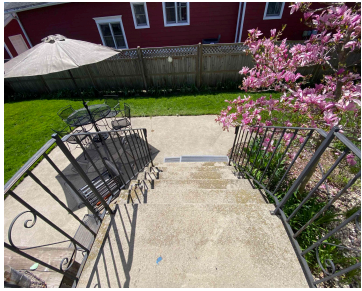


338 JEFFERSON STREET, MARINETTE, WI, 54143

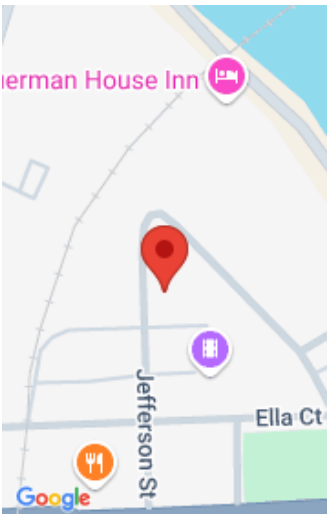
https://www.adashunjones.com

338 JEFFERSON  
Street, MARINETTE,  
WI, 54143



Remarks: Beautiful Historic Home with all the Amenities! City of Marinette. 4+ Bed 2 Bath This home features Large sun filled rooms with high ceilings. Newly Remodeled Kitchen featuring butcher block counters, Stainless appl and walk in Pantry. Formal Dining, Huge Living space, Cozy Den/Office/Main floor Bed, Main floor Full Bath, Gorgeous Stairway lead upstairs...

- 4 beds
- 2 baths
- Residential
- Residential
- Closed
- 2218 sq ft



---

# Features

<b>GarageYN:</b> No	<b>AttachedGarageYN:</b> No
<b>FireplaceYN:</b> No	<b>PoolPrivateYN:</b> No
<b>Features:</b> None	<b>Above Grade Finished Area, sq ft:</b> 2218
<b>Tax Amount:</b> 1973.3	<b>Inclusions:</b> Stove, Refrigerator, Dishwasher, Washer and Dryer , Blinds, Shed
<b>Exclusions:</b> Sellers personal belongings, Pantry Chandelier	

---

# Amenities

<b>Waterfront available:</b> No	<b>Water Source:</b> Municipal/City
<b>Sewer:</b> Municipal Sewer	

---

# Room Sizes

Room type	Dimensions	Level
Bedroom 1	13x13	Upper
Bedroom 2	13x12	Upper
Bedroom 3	13x12	Upper
Bedroom 4	13x10	Upper
Family Room	17x12	Main
Formal Dining Room	13x12	Main
Kitchen	13x10	Main
Living Or Great Room	14x12	Main
Other Room	14x12	Main
Other Room 2	10x6	Main
Other Room 3	7x7	Main

## Building Details

**NewConstruction**YN: No

**Heating:** Central A/C, Forced Air

**Basement:** Full

**Exterior material:** Wood/Wood Shake/Cedar

**Parking:** Attached,Opener Included