

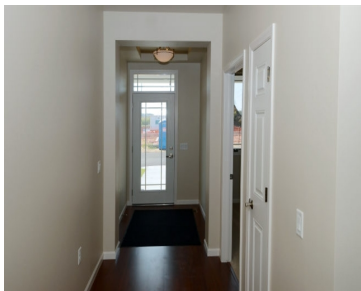
334 SAMUEL DRIVE, WI, 53717

<https://www.adashunjones.com>

334 Samuel Drive,
WI, 53717



\$210,000

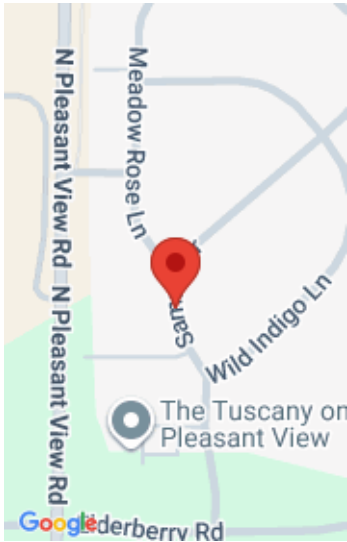


THIS IS A LIFE LEASE. Experience a carefree lifestyle at Attic Angel Prairie Point, Madison's premiere retirement community(55+). Enjoy amenities such as an art studio, fitness center, salon, dining venues and so much more.



Michael Adler
Restaino & Associates

- 2 beds
- 1 bath
- Condominium,PUDSIP
- Sold
- 1450 sq ft



Features

GarageYN: Yes

FireplaceYN: No

WindowFeatures: Skylight(s)

Utilities: Cable Available

Above Grade Finished Area, sq ft:
1450

Inclusions: Humidifier

AttachedGarageYN: Yes

PoolPrivateYN: No

Lot Features: Near Public Transit

Features: Accessible Bedroom, Accessible Entrance, Accessible Full Bath, Gas, Main Level, Vaulted Ceiling(s), Walk-in Closet(s)

Tax Year: 2011

Amenities

Waterfront available: No

Amenities:

Dishwasher, Disposal, Dryer, Microwave, Range, Refrigerator, Washer, Water Softener Owned

Sewer: Public Sewer

Cooling:
Central Air

Water Source:
Public

Building Details

NewConstructionYN: No

Basement: Full

Parking: Attached, Garage, Garage Door Opener

Heating: Forced Air, Natural Gas

Exterior material: Aluminum/Steel, Brick, Stone

Agent Details

Agent Full Name: Michael Adler

Agent Email: mikeadler@tds.net