

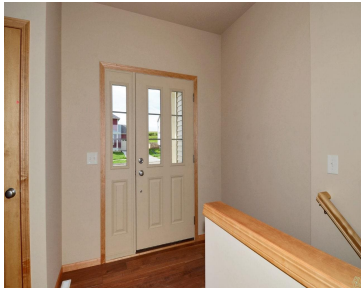
334 CHAPEL ROYAL DRIVE, VERONA, WI, 53593

https://www.adashunjones.com

334 Chapel Royal Drive, Verona, WI, 53593



\$269,900



SOLD COMP



Todd Pierce
Stark Company, REALTORS

- 3 beds
- 2 baths
- RESR2Z
- Sold
- 1573 sq ft



Features

GarageYN: Yes

FireplaceYN: No

Utilities: Cable Available

AttachedGarageYN: Yes

PoolPrivateYN: No

Features: Accessible Doors, Accessible Hallway(s), Breakfast Bar, Cable Available, Kitchen Island, Main Level, Walk-in Closet(s), Water softener inc

Above Grade Finished Area, sq ft: 1573

Tax Year: 2013

Tax Amount: 2

Amenities

Waterfront available: No

Amenities: Disposal, Water Softener Owned

Sewer: Public Sewer

Cooling: Central Air

Water Source: Public

Building Details

NewConstructionYN: No

Basement: Full, Full Size Windows/Exposed, Sump Pump, Walk-Out Access

Parking: Attached, Garage Door Opener, Paved

Heating: Forced Air, Natural Gas

Exterior material: Vinyl Siding

Agent Details

Agent Full Name: Todd Pierce

Agent Email: tpierce@veridianhomes.com