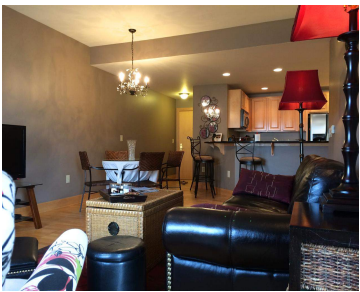
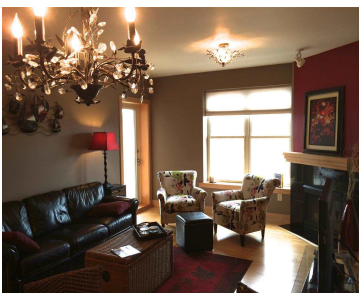




\$314,900

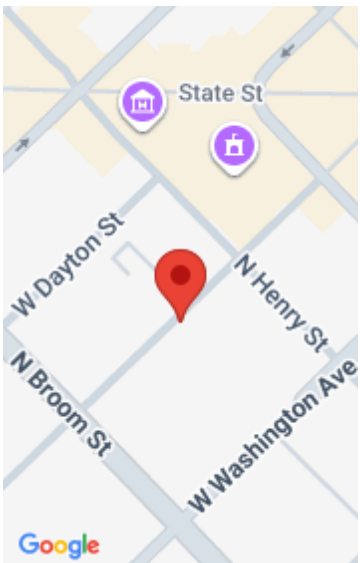


Popular 2Bd/2Ba floor plan at Metro Place II! Condo is attractively appointed w/maple cabinets & hardwood floors throughout, granite counters, SS appliances w/gas stove, gas FP, mstr suite w/WIC & jetted tub bath PLUS a tasteful color palette to boot! Storage & parking included! Live 3 blocks from the Square near UW, the arts, restaurants...

- 2 beds
- 2 baths
- Condominium,PD
- Sold
- 1218 sq ft



Katie Jo Schmitz
Dines Incorporated



Features

GarageYN: No

AttachedGarageYN: Yes

FireplaceYN: No

PoolPrivateYN: No

Security Features: Building Security

Lot Features: Near Public Transit

Utilities: Cable Available

Features: Accessible Bedroom, Accessible Doors, Accessible Entrance, Accessible Full Bath, Breakfast Bar, Gas, Main Level, Soaking Tub, Storage, Walk-in Closet(s)

Above Grade Finished Area, sq ft: 1218

Tax Year: 2013

Tax Amount: 6565

Inclusions: All window coverings

Amenities

Waterfront available: No

Cooling: Central Air

Amenities: Dishwasher, Disposal, Dryer, Microwave, Range, Refrigerator, Washer

Water Source: Public

Sewer: Public Sewer

Building Details

NewConstructionYN: No

Heating: Heat Pump

Basement: None

Exterior material: Brick, Stone

Parking: Assigned, Attached

Agent Details

Agent Full Name: Katie Jo Schmitz

Agent Email: katiejo@thehubrealty.com