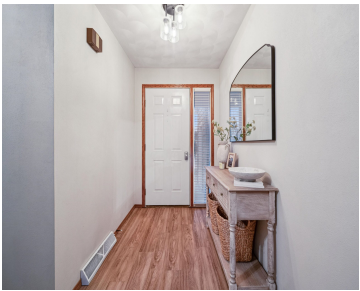


3311 BOB O LINK LANE, APPLETON, WI, 54915

https://www.adashunjones.com

3311 BOB O LINK  
Lane, APPLETON,  
WI, 54915



Nestled on a wooded lot in a sought after neighborhood, you will find this quaint, well cared for ranch home! Quality updates will catch your eye. Kitchen boasts white cabinetry, breakfast bar, Corian countertops accented with beautiful backsplash & appliances included! Open floor plan from kitchen leads to DA and generous size LR drenched with...

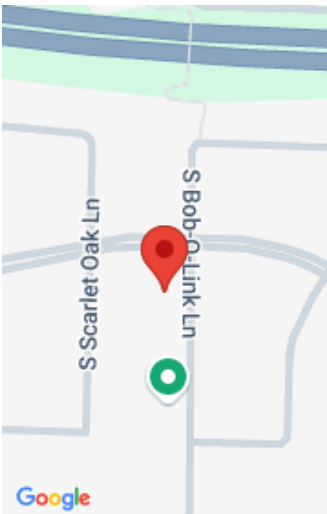
- 3 beds
- 2 baths
- Residential
- Residential
- Active
- 1456 sq ft



**Tiffany**  
Coldwell Banker Real Estate Group



**Roxanne**  
Coldwell Banker Real Estate Group



---

## Features

<b>GarageYN:</b> No	<b>AttachedGarageYN:</b> No
<b>FireplaceYN:</b> No	<b>PoolPrivateYN:</b> No
<b>ExteriorFeatures:</b> Patio, Storage Shed	<b>Lot Features:</b> Wooded
<b>Features:</b> Gas,One,Wood/Simulated Wood Fl	<b>Above Grade Finished Area, sq ft:</b> 1456
<b>Tax Amount:</b> 4266.89	

---

## Amenities

<b>Waterfront available:</b> No	<b>Amenities:</b> Dishwasher,Dryer,Microwave,Range,Refrigerator,Washer
<b>Water Source:</b> Municipal/City	<b>Sewer:</b> Municipal Sewer

---

## Room Sizes

Room type	Dimensions	Level
Bedroom 1	14x11	Main
Bedroom 2	11x09	Main
Bedroom 3	12x09	Main
Kitchen	14x10	Main
Living Or Great Room	23x18	Main
Dining Room	10x09	Main
Unfinished	15x11	Main

## Building Details

**NewConstructionYN:** No

**Heating:** Central A/C, Forced Air

**Exterior material:** Patio,Storage Shed,Vinyl,Wood/Wood Shake/Cedar

**ArchitecturalStyle:** Ranch

**Basement:** Full

**Parking:** Attached

## Agent Details

**Agent Full Name:** Tiffany L Holtz

**Agent Email:** tholtz@coldwellhomes.com