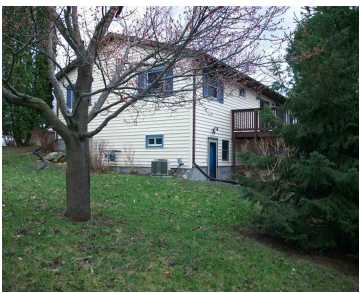


316 MAPLE DRIVE, MOUNT HOREB, WI, 53572

https://www.adashunjones.com

316 Maple Drive,  
Mount Horeb, WI,  
53572



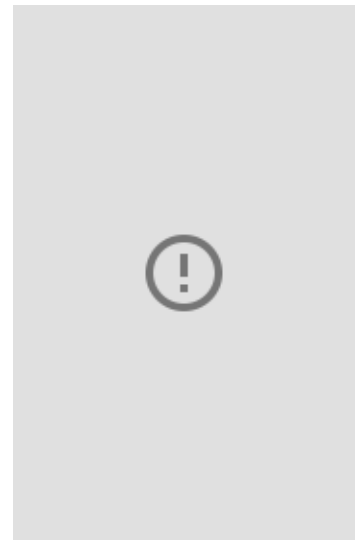
\$155,000

You’ve been searching for a place to nestle into and create memories within, right? Well; this is it. 3 bedrooms provide ample space for a growing family, with an option for a 4th just in case. The deck and patio allow for entertaining outdoors, while the open floor plan lets you bring the party indoors...



**Jason McGill**  
Century 21 Affiliated Pfister

- 3 beds
- 1 bath
- Res
- Sold
- 1460 sq ft



---

## Features

**GarageYN:** Yes

**FireplaceYN:** No

**Lot Features:** Corner Lot, Wooded

**Features:** Accessible Bedroom, Accessible Full Bath, Breakfast Bar, Cable Available, Gas, Jetted bathtub, Lower Level

**Below Grade Finished Area, sq ft:** 380

**Tax Amount:** 3355

**AttachedGarageYN:** Yes

**PoolPrivateYN:** No

**Utilities:** Cable Available

**Above Grade Finished Area, sq ft:** 1080

**Tax Year:** 2013

---

## Amenities

**Waterfront available:** No

**Amenities:** Range, Refrigerator

**Sewer:** Public Sewer

**Cooling:** Central Air

**Water Source:** Public

---

## Building Details

**NewConstructionYN:** No

**Basement:** Full, Full Size Windows/Exposed, Partially Finished, Walk-Out Access

**Parking:** Additional Parking, Attached, Paved

**Heating:** Forced Air, Natural Gas

**Exterior material:** Vinyl Siding

---

## Agent Details

**Agent Full Name:** Jason McGill

**Agent Email:** Jason@kjkrealty.com