

3032 HARTWICKE DRIVE, FITCHBURG, WI, 53711

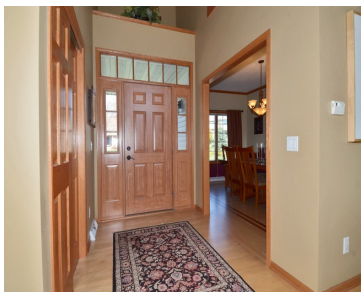
https://www.adashunjones.com

3032 Hartwicke
Drive, Fitchburg,
WI, 53711



\$519,900

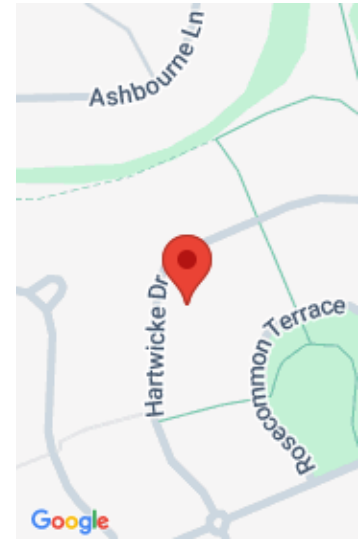
Immaculate Highlands of Seminole Traditional style home located with in walking distance to bike trails, parks, Arboretum and Restaurants. Open concept floor plan with loft is perfect for families and entertaining. Hardwood floors throughout main level, granite counter tops and stainless steel appliances. fully finished lower level is partially exposed, includes second master suite and...



- 5 beds
- 3 baths
- Res
- Sold
- 4300 sq ft



Ryan Oliveresen
Bunbury & Assoc, REALTORS



Features

GarageYN: Yes

AttachedGarageYN: Yes

FireplaceYN: Yes

PoolPrivateYN: No

Utilities: Cable Available

Features: Accessible Bedroom, Accessible Full Bath, Cable Available, Dryer, Gas, Jetted bathtub, Kitchen Island, Main Level, Pantry, Vaulted Ceiling(s), Washer, Water softener RENTED

Above Grade Finished Area, sq ft: 2951

Below Grade Finished Area, sq ft: 1350

Tax Year: 2014

Tax Amount: 8781

Inclusions: Humidifier, All window coverings

Amenities

Waterfront available: No

Cooling: Central Air

Amenities: Disposal, Dryer, Freezer, Range, Washer, Water Softener Rented

Water Source: Public

Sewer: Public Sewer

Building Details

NewConstructionYN: No

Heating: Forced Air, Natural Gas

Basement: Finished, Partial, Sump Pump

Exterior material: Vinyl Siding

Parking: Attached, Garage Door Opener, Paved

Agent Details

Agent Full Name: Ryan Oliversen

Agent Email: roliversen@outlook.com