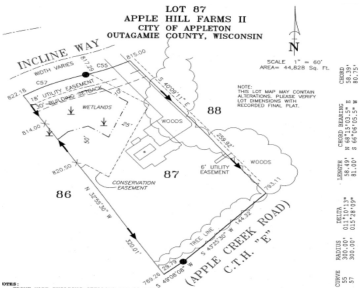
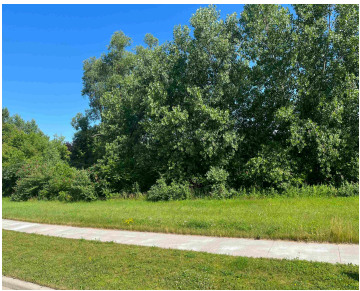


3005 INCLINE WAY, APPLETON, WI, 54913

https://www.adashunjones.com

3005 INCLINE Way,
Appleton, WI,
54913



The seller is offering a \$10,000 closing credit to use toward tree removal or landscaping, giving you the flexibility to customize the outdoor space to your liking. This 1.02-acre lot in the lovely Apple Hill Farms Subdivision on the north side of Appleton is primed and waiting for you to construct your dream home. Its...

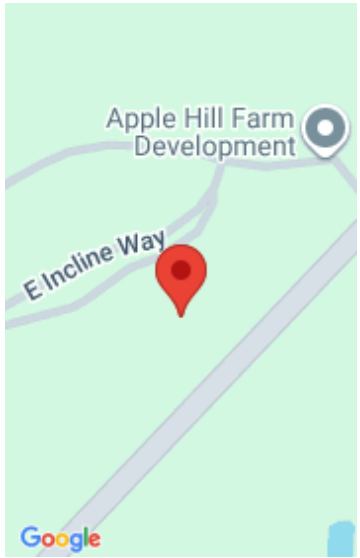
- Land
- Residential,Vacant Land/Acreage
- Active



Danielle
Coldwell Banker Real Estate Group



Bruce
Coldwell Banker Real Estate Group



Features

GarageYN: No **AttachedGarageYN:** No
FireplaceYN: No **PoolPrivateYN:** No
Lot Features: Suburb **Utilities:** All Underground, Cable Available, Electricity Available, Gas
Tax Amount: 1005.89

Amenities

Waterfront available: No **Water Source:** Municipal/City
Sewer: Municipal Sewer

Building Details

NewConstructionYN: No

Agent Details

Agent Full Name: Danielle M Hart **Agent Email:** dhart@coldwellhomes.com