

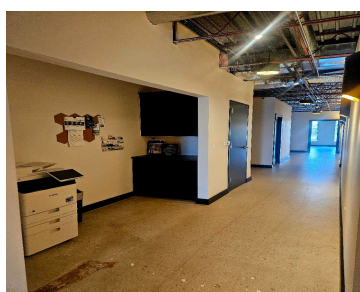
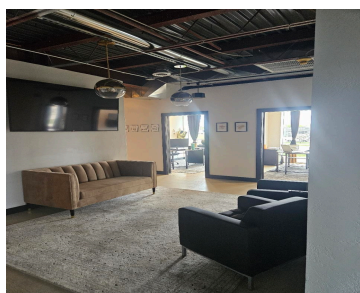
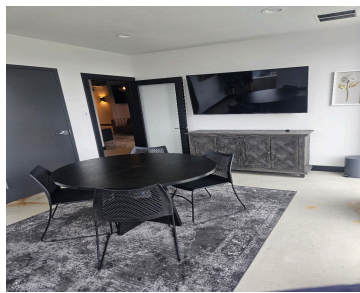
3003 W COLLEGE AVENUE, APPLETON, WI, 54914

<https://www.adashunjones.com>

3003 W COLLEGE Avenue, APPLETON, WI, 54914



\$5,400 / month



Now Available for Lease — 3003 W College 5,400 sq ft office space available in a prime, high-visibility location on W College Avenue. \$12/SF NNN Professional setting Excellent visibility & accessibility Ideal for professional office, IT, service-based business, or growing company Position your business in one of the Fox Valley’s busiest commercial corridors with easy...

• 5400 sq ft



Michelle
Realty One Group Haven



Features

Lease Amount, per sq ft: \$12

Area, sq ft: 5,400 sq ft

Year built: 1970

Parcel Number: 101113200

AttachedGarageYN: No

Cooling: Central Air

PoolPrivateYN: No

Sewer: In Sanitation District

Leasable Area, sq ft: 5,400

Lot Size, acres: 0.66

For Sale or Rent: For Sale

GarageYN: No

Heating: Forced Air, Zoned

FireplaceYN: No

Water Source: Public

Tax Amount: \$12,857.43

Building Details

NewConstructionYN: No

Basement: None

Exterior Material: Brick, Vinyl Siding

Agent Details

Agent Full Name: Michelle L. Maiman

Agent Email: michelle@roghaven.com