

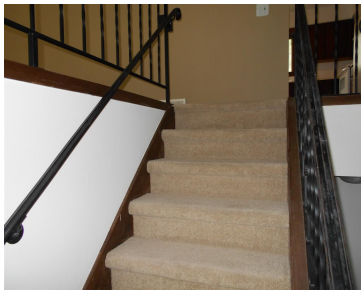
2723 TAMI TRAIL, FITCHBURG, WI, 53711

<https://www.adashunjones.com>

2723 Tami Trail,
Fitchburg, WI,
53711



\$197,500

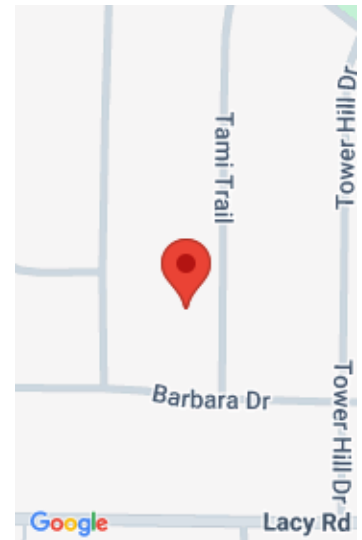


Beautiful Bi-Level home in the City of Fitchburg. Located on a quiet street, over looking the large back yard from the deck, slightly on a hill. Freshly painted, new carpet all lies within this 4 bedroom 3 bath home. Lower family room with a gorgeous wood fireplace, plenty of storage and closets. Large 2 car...

- 4 beds
- 3 baths
- R-1
- Sold
- 1917 sq ft



Kari Pattee
First Weber Inc



Features

GarageYN: Yes

FireplaceYN: No

Utilities: Cable Available

Above Grade Finished Area, sq ft:
1404

Tax Year: 2013

Inclusions: All window coverings

AttachedGarageYN: Yes

PoolPrivateYN: No

Features: Cable Available, Lower Level, Wood Burning

Below Grade Finished Area, sq ft: 513

Tax Amount: 4686

Amenities

Waterfront available: No

Amenities: Dishwasher, Range, Refrigerator

Sewer: Public Sewer

Cooling: Central Air

Water Source: Public

Building Details

NewConstructionYN: No

Basement: Finished, Full

Parking: Attached, Garage Door Opener, Paved

Heating: Forced Air, Natural Gas

Exterior material: Vinyl Siding

Agent Details

Agent Full Name: Kari Pattee

Agent Email: kari@keys4re.com