

271 SUMMIT AVENUE, DARLINGTON, WI, 53530

https://www.adashunjones.com

271 SUMMIT
Avenue, Darlington,
WI, 53530

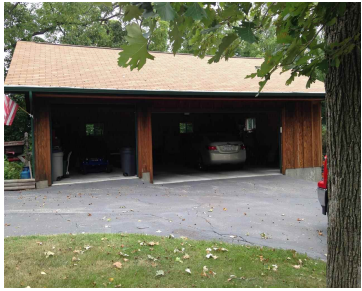


\$218,000

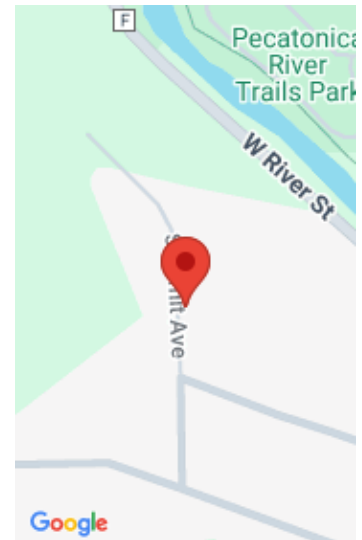
LODGE LIVING EVERYDAY! WHOLE LOG HOME IN EXQUISITE CONDITION ON SECLUDED 2.5 A. LOT-CLOSE TO SCHOOLS, DOWNTOWN, MATURE FLOWER BEDS, VISITS FROM WILDLIFE, YET OVERLOOKING DARLINGTON! SELLER RELOCATING!



Pam Teasdale
Teasdale Realty & Auction Serv, LLC



- 3 beds
- 2 baths
- Res
- Sold
- 4000 sq ft



Features

GarageYN: Yes

FireplaceYN: No

Lot Features: Wooded

Features: Accessible Bedroom, Accessible Doors, Accessible Full Bath, Breakfast Bar, Cable Available, Dryer, Gas, Hot Tub, Kitchen Island, Main Level, Vaulted Ceiling(s), Washer, Water softener inc

Tax Year: 2014

Inclusions: Some Window Coverings

AttachedGarageYN: No

PoolPrivateYN: No

Utilities: Cable Available

Above Grade Finished Area, sq ft: 4000

Tax Amount: 6091

Amenities

Waterfront available: River Front

Amenities:

Dishwasher, Disposal, Dryer, Microwave, Range, Refrigerator, Washer, Water Softener Owned

Sewer: Public Sewer

Cooling:
Central Air

Water Source:
Public

Building Details

NewConstructionYN: No

Basement: Finished, Full, Walk-Out Access

Parking: Detached, Paved

Heating: Forced Air, Natural Gas

Exterior material: Log

Agent Details

Agent Full Name: Pam Teasdale

Agent Email: pamteas@yousq.net